

The background of the top half of the cover is a black and white space scene. It features a bright star or planet in the upper left, a streak of light resembling a comet or meteor in the upper right, and a field of smaller stars and planets scattered across the dark space. The Fujitsu logo is positioned in the top right corner.

FUJITSU

*DynaMO*

---

*640 Pocket*

3.5-inch Magneto-Optical Disk Drive

**MANUAL**

## Table of Contents 1/2

● Click on any item to jump to that page.

Introduction.....	1
■ Important .....	1
■ Formatted Capacity of MO Disks.....	2
■ Using this Product for Applications with High Safety Levels .....	2
Notes on Handling this Product .....	3
Before Using the Drive Unit .....	8
■ Hardware and Software Requirements .....	8
1- Using the MO Drive Unit.....	9
1-1 Component Names and Functions.....	10
1-2 Handling the MO Drive Unit .....	11
1-2-1 Handling the MO Drive Unit and MO Disks.....	11
1-2-2 Notes on Using the MO Drive Unit.....	11
1-2-3 Maintenance .....	12
1-2-4 Using the AC Adapter (Sold Separately) .....	12
2- MO Drive Unit Setup .....	13
2-1 Setup Procedure .....	14
2-2 Setup in Windows 98 (including Second Edition)/Windows Me .....	15
2-2-1 Preparing the MO Drive Unit and its Attachments .....	15
2-2-2 MO Drive Unit Orientation.....	15
2-2-3 Installing the Device Drivers on your Computer.....	16
2-2-4 Connecting the MO Drive Unit to your Computer .....	19
2-3 Setup in Windows 2000/Windows XP .....	20
2-3-1 Preparing the MO Drive Unit and its Attachments .....	20
2-3-2 MO Drive Unit Orientation.....	20
2-3-3 Installing the Device Drivers on your Computer.....	21
2-3-4 Connecting the MO Drive Unit to your Computer .....	23
2-4 Setup on a Macintosh .....	25
2-4-1 Preparing the MO Drive Unit and its Attachments .....	25
2-4-2 MO Drive Unit Orientation.....	25
2-4-3 Connecting the MO Drive Unit to your Computer .....	26
3- Using the MO Drive Unit.....	28
3-1 Handling MO Disks .....	29
3-1-1 Inserting MO Disks.....	29
3-1-2 Ejecting MO Disks.....	29
3-1-3 Write-protecting MO Disks.....	33
3-2 Formatting MO Disks .....	34
3-2-1 On Windows Systems.....	34
3-2-2 On Macintosh Systems .....	39
3-3 Disconnecting the MO Drive Unit.....	41
3-3-1 On Windows Systems.....	41
3-3-2 On Macintosh Systems .....	42

## Table of Contents 2/2

● Click on any item to jump to that page.

4- Uninstalling Device Drivers.....	43
4-1 Windows 98 (including Second Edition)/Windows Me .....	44
4-2 Windows 2000/Windows XP .....	45
5- Troubleshooting .....	46
5-1 Troubleshooting .....	47
6- Product Specifications .....	51
6-1 Product Specifications.....	52

## Introduction

Thank you for purchasing this DynaMO 640 Pocket magneto-optical disk drive (hereafter referred to as the MO drive unit). Take the time to read this manual before using this product.

### Important

---

1. Unauthorized transfer or duplication of all or any part of this document is forbidden.
2. Where required for product improvements, etc., this product and this manual are subject to change without prior notice.
3. Fujitsu Limited accepts no responsibility whatsoever with regard to third-party rights or other rights originating from the use of data described in this manual.
4. Every care and effort has been taken in the manufacture and production of this product and the contents of this manual. In the unlikely event that a problem should exist, contact Fujitsu Limited at your earliest convenience.
5. Note that Fujitsu Limited accepts no liability whatsoever for the loss of or damage to any data as a result of the use of this product. Important data should be backed up on a regular basis as a precautionary measure.
6. Further to item 5, Fujitsu Limited accepts no liability whatsoever for compensation with regard to systems, data or MO disks. Further, Fujitsu Limited is not liable for any compensation with regard to losses due to software or hardware faults, incorrect operation, or any other causes.
7. In no event should this product be disassembled. If this product is disassembled, Fujitsu Limited shall not be required to provide compensation, even where an accident occurs that results in damage to property. Note also that, the customer is liable for the cost of repairs to disassembled products, even where that unit is still under warranty.
8.
  - DynaMO is a registered trademark of Fujitsu Limited.
  - MOWare is a registered trademark of Fujitsu Limited.
  - Microsoft and Windows are trademarks of the Microsoft Corporation of the U.S. registered in the U.S. and other countries.
  - Macintosh and Mac are trademarks of Apple Computer, Inc.
  - All other company or product names used in this document are trademarks or registered trademarks of their respective holders.

## Formatted Capacity of MO Disks

The indicated capacity of MO disks is based on the calculation of 1 KB as being equal to 1,000 bytes. However, when a disk is formatted by your operating system or when you check a disk's properties, the displayed capacity may be different, as it is calculated on the basis of 1 KB being equal to 1,024 bytes.

## Using this Product for Applications with High Safety Levels

This product is designed and manufactured for use in ordinary applications, such as general office, personal and home use. It is not designed or manufactured for applications that require high levels of safety.

Do not use this product for applications where high safety levels are needed without first taking measures to ensure the necessary safety is provided.

Examples of applications where extremely high levels of safety are required are given below. The failure to ensure such safety levels can lead directly to serious risk of death and/or injury.

Note that Fujitsu Limited accepts no responsibility whatsoever for injury or damage occurring as a result of the use of this product for applications where high safety levels are required.

### Applications with High Safety Levels

**Nuclear Power Core Control**  
**Aircraft Flight Control**  
**Air Traffic Control**  
**Mass Transportation Operation Control**  
**Life Support**  
**Weapons Firing Control**

This device is a Class B information processing device (to be used in or in the vicinity of residential areas) and conforms to the Voluntary Control Council for Interference by Information Technology Equipment (VCCI) standard aimed at preventing radio wave interference in residential areas. However, this device could interfere with signal reception if placed close to a radio or television receiver. Refer to the User's Manual for information on using this device correctly.

This device complies with Part 15 of the FCC Rules. Operation is subject to the following two conditions: (1) This device may not cause harmful interference, and (2) this device must accept any interference received, including interference that may cause undesired operation:

#### **FCC WARNING:**

Changes or modifications not expressly approved by the party responsible for compliance could void the user's authority to operate the equipment.

This equipment has been tested and found to comply with the limits for a Class B digital device, pursuant to Part 15 of the FCC Rules. These limits are designed to provide reasonable protection against harmful interference in a residential installation.

This equipment generates, uses, and can radiate radio frequency energy and, if not installed and used in accordance with the instructions, may cause harmful interference to radio communications. However, there is no guarantee that interference will not occur in a particular installation. If this equipment does cause harmful interference to radio or television reception, which can be determined by turning the equipment off and on, the user is encouraged to try to correct the interference by one or more of the following measures:

- Reorient or relocate the receiving antenna.
- Increase the separation between the equipment and receiver.
- Connect the equipment into an outlet on a circuit different from that to which the receiver is connected.
- Consult the dealer or an experienced radio/TV technician for help.

## Notes on Handling this Product

### ■ About the Symbols Used

The symbols and details shown below are used to indicate important information on the handling of this product.

Be sure to read this information and observe it carefully to ensure that you use this product properly.



### **Warning**

Indicates content involving the risk of death or serious injury to the user.



### **Caution**

Indicates content involving risk of accident, fault or damage.

### ■ The Meanings of the Icons Used

The icons and details shown below are used to indicate important information on the handling of this product.

Be sure to read this information and observe it carefully to ensure that you use this product properly.



Indicates information that prompts a Warning or Caution.



Indicates information on prohibited items.



Indicate information on mandatory items.



## Warnings



When handling this product, carefully follow any warnings or cautions provided by the computer and peripheral device manufacturers.



**Do not disassemble.**

Never disassemble this device in any way, not even by removing one of the screws. Disassembly of this device can cause damage, faults or serious accidents, such as a fire, short circuit or electric shock. In the event of such accidents, Fujitsu Limited shall not be held liable for any damage incurred by the customer.



**If an abnormality occurs.**

If the device emits an unusual odor, smoke, fire or electrical sparks, or if there is a lightning strike nearby, immediately unplug the USB cable.



**Do not insert foreign objects.**

There are mechanical moving parts as well as parts carrying high-voltage electricity inside this device. Do not insert foreign objects as this can cause a serious incident, such as a short circuit, electrical damage or device failure. Such an action could also cause a fire, short circuit or electric shock. Water or other liquids entering or soaking this device could result in damage to or a fault in the device, and could also cause a fire, short circuit or electric shock. In some cases, this could result in irreparable damage. If any foreign object enters the device, do not attempt to disassemble the device or remove the object yourself. Contact your Fujitsu dealer and request repairs.



**Handling this product with wet hands is dangerous.**

Never operate this device or plug/unplug the USB cable or power cable when your hands are wet. This could cause a serious accident, such as damage to the device or a device fault, and could also cause a fire, short circuit or electric shock.



**Do not use in very moist or very humid locations.**

Do not use this device in very moist or very humid locations such as bathrooms as this can cause a serious accident, such as a fire, short circuit or electric shock.



**Notes on handling the ejector pin.**

Keep the ejector pin out of the reach of small children to prevent the pin from being accidentally swallowed.



## Cautions

	<b>Avoid sources of strong magnetic fields and electrical signals.</b>	Keep this device away from magnets or other objects that generate a magnetic field and away from wireless equipment or other devices that emit electrical signals as such equipment could cause this device to malfunction.
	<b>Do not drop or bump the device.</b>	Dropping or bumping the device during operation or transportation could result in strong shocks or vibrations that could cause faults or damage.
	<b>Remove the MO disk before moving the device.</b>	Do not move the device while it is operating or while an MO disk is installed in the device as this could damage the MO disk. When moving the device, be sure to remove the MO disk first.
	<b>Avoid equipment that is sensitive to electrical signals.</b>	Because the use of this device in close proximity to a radio or television receiver could disrupt signal reception, it should not be set up close to such equipment. It should also be kept away from other devices that are sensitive to electrical signals as it could cause such devices to malfunction.
	<b>Install the device appropriately.</b>	Take care not to install the device in locations affected by strong vibrations or large amounts of dust or in locations where chemicals are sprayed as this could result in device faults.
	<b>Do not use in conditions or places where there are extremes of temperature or humidity.</b>	Do not use this device in locations subject to extremely high (or low) temperatures, in very humid locations, in direct sunlight or near heating appliances (heaters, cooking appliances, etc.) as this could cause device faults. Note also that because sudden changes in temperature can result in condensation-related faults, allow the ambient temperature to stabilize before using the device.
	<b>Do not operate the device during MO disk read/write operations.</b>	Because it uses a cache write function, this device continues to operate even after writing has finished on the computer. Do not switch the device off or eject the disk while the access light is flashing as this could result in device damage or faults, or physical damage to the MO disk and/or the data on the disk.
	<b>Back up your data.</b>	Unanticipated malfunctions or damage occurring during an MO disk read/write operation can cause the data on the MO disk and/or the data that was being read/written to be unrecoverable. The data involved should be backed up beforehand as a precautionary measure. Also, be sure to write-protect MO disks containing important data and programs.
	<b>Do not place objects on the device.</b>	Do not place objects on top of this device as this could scratch or damage the device.
	<b>Do not insert objects (other than MO disks) into the device.</b>	Do not put anything (floppy disks, etc.) other than MO disks into the slot as this may cause damage or a fault.
	<b>Handle MO disks carefully.</b>	Eject the MO disk before connecting or disconnecting the MO drive unit from your computer.





## Warnings

### When using the AC adapter



**Plug the adapter firmly all the way in.**

If the adapter is not plugged firmly all the way into the power socket, dirt or other foreign matter in the gap could cause a fire. When unplugging the adapter, do so by gripping the plug itself rather than the cord. Pulling the plug out by the cord may damage or break the wiring, which could result in a fire, electrical problems or other serious accidents.



**Take care when disconnecting the power cable.**

Take great care not to damage the power cable. Pulling the plug out by the cable, placing objects on top of the cable or allowing the cable to come into contact with sharp objects may damage to the cable sheathing, which could cause a malfunction, fire, electrical problems or other serious accidents.



**When unplugging the AC adapter.**

If you unplug the AC adapter while power is being supplied to the MO drive unit from your computer via the USB port, the MO drive unit is reset and the MO disk may be damaged. Before unplugging the adapter, first unplug the USB cable for the MO drive unit or switch the computer off. Do not unplug the AC adapter from the mains power socket by pulling on the adapter cord. Unplug the AC adapter carefully by gripping the body of the adapter itself. Pulling on the AC adapter's cord may expose the core wires of the cord and could cause an electric shock or a fire.



**If the drive unit emits unusual sounds or odors.**

If the drive unit behaves abnormally, such as emitting excessive heat, smoke, or unusual odors or sounds, immediately unplug the USB cable from the MO drive unit and then unplug the AC adapter from the mains power supply. Check that the unit is no longer emitting smoke and then take the unit to the shop where you bought it for repairs. Do not attempt to repair the unit yourself as this is dangerous. Note that continuing to use a faulty unit could cause an electric shock or fire.



**If a foreign object gets inside the unit.**

If foreign matter (water, metal fragments, liquid, etc.) gets inside the MO drive unit, immediately unplug the USB cable from the MO drive unit and then unplug the AC adapter from the mains. Continuing to use the faulty unit could result in an electric shock or fire. Immediately take the unit to the shop where you bought it for repairs.



**If you drop or damage your MO drive unit.**

If you drop or damage the MO unit, immediately unplug the USB cable from the MO drive unit and then unplug the AC adapter from the mains. Continuing to use the faulty unit could result in an electric shock or fire. Immediately take the unit to the shop where you bought it for repairs.



**If lightning strikes nearby.**

If lightning strikes nearby, unplug the AC adapter from the mains. Continuing to use the unit may result in electrical damage to the unit and could cause an electric shock or fire.



**Do not unplug the AC adapter with wet hands.**

Please do not unplug the AC adapter with your hands wet as this could cause an electric shock.



**Do not damage or attempt to modify the AC adapter.**

Do not damage or tamper with the AC adapter. Pulling on the adapter, using undue force to bend or twist the adapter, heating the AC adapter or placing heavy objects on the adapter will damage the adapter and could cause an electric shock or fire.



**Do not use if the AC adapter cord or DC plug are damaged, or if the mains power socket is loose.**

Do not use the AC adapter if the adapter cord or DC plug are damaged, or if the mains socket is too loose. Using the AC adapter in such situations could cause an electric shock or fire. Return the AC adapter to the store where you purchased it for repairs.



**If there is dust in the mains socket used for the AC adapter.**

If there is dust in apertures of the mains socket used for the AC adapter or dust on or near the metal pins of the DC plug, wipe it off thoroughly with a dry cloth. Using the AC adapter without cleaning off any dust could cause a fire.



## Cautions

### When using the AC Adapter



**Do not use the AC adapter with the cord bundled.**

Do not use the AC adapter with the cord bundled as this generates heat and could cause a fire.



**Always unplug the AC adapter from the mains power socket if the MO drive unit will not left unused for a long period.**

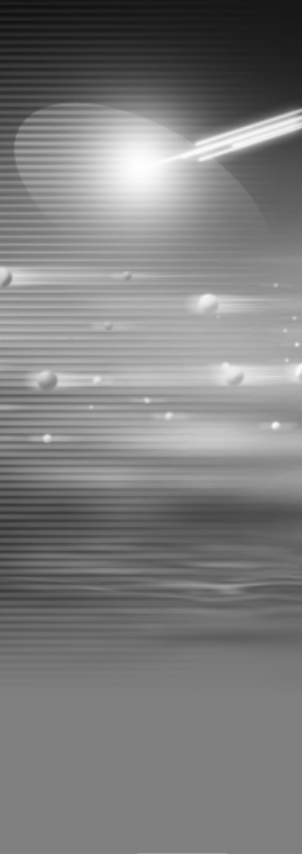
If you do not plan to use the MO drive unit for a long period, unplug the AC adapter from the mains supply as a safety precaution. Failing to do so could cause a fire or fault.

## Before Using the Drive Unit

### ■ Hardware and Software Requirements

---

Compatible computers	IBM PC/AT-compatible computers Apple Macintosh computers
Compatible operating systems	Windows XP, Windows Me, Windows 2000 Professional, Windows 98 (Including 2nd Edition) Mac OS 9.0.4 and later Mac OS X 10.0.1 and later
Interface	USB 1.1
Restrictions	<ul style="list-style-type: none"><li>• Compatible only with machines with a built-in USB interface as a standard feature.</li><li>• Operation guaranteed only for pre-installed operating systems.</li><li>• Operation guaranteed only for direct connections to a computer's USB port.</li><li>• The optional AC adapter may be necessary, depending on the performance of your computer's USB bus power supply.</li><li>• The USB interface is not guaranteed to operate with all USB devices.</li><li>• For the latest product information and computer compatibility information, visit the Fujitsu Internet website.</li><li>• Use only the USB cable provided. Operation with other cables is not guaranteed.</li></ul>



# 1

## Using the MO Drive Unit

[Return to Table of Contents ▲](#)

*DynaMO*  

---

*640 Pocket*

# - 1 Component Names and Functions

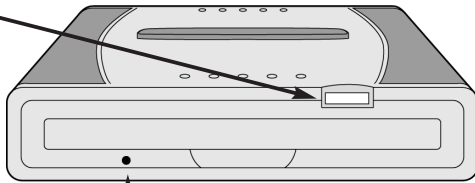
[Return to Table of Contents ▲](#)

**Power/Access Light**

Off: When the unit is not connected to a computer or when power is not supplied from the optional AC adapter.  
On: When the unit is connected to a computer or when power is supplied from the optional AC adapter.  
Flashing: During MO disk read/write operations.

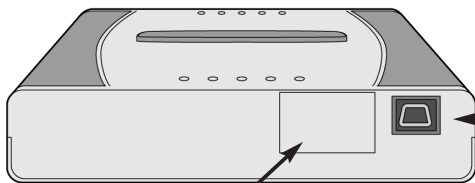
**Eject Button**

Press this button to eject an MO disk.  
\* If you are using a Macintosh, this button does not operate.



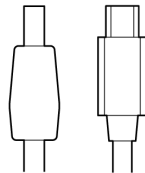
**Manual Eject Hole**

Use this to eject an MO disk if the disk will not eject normally.



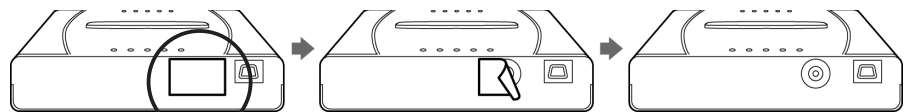
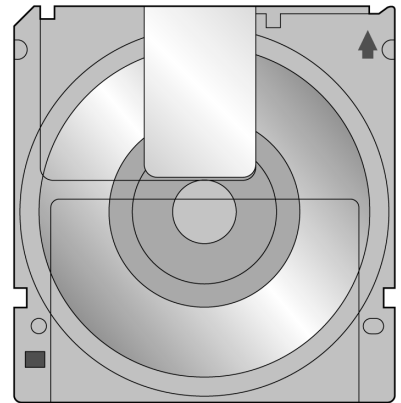
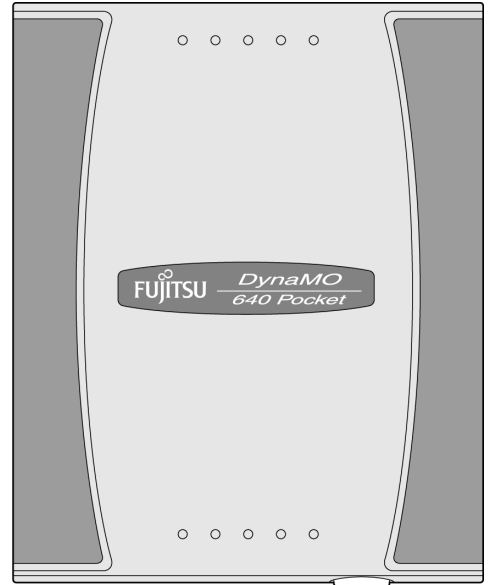
**DC IN (Power Supply)**

Used for connecting the DC plug to supply power from the optional AC adapter.  
\* Peel off the sticker before use.  
(See figures at right.)



**USB Connector**

Used for connecting the USB cable from the computer.



# -2 Handling the MO Drive Unit

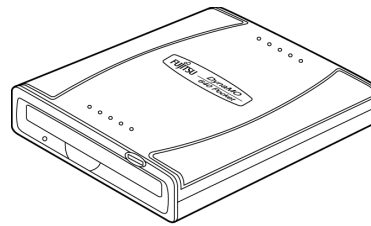
[Return to Table of Contents ▲](#)

## 1-2 1 Handling the MO Drive Unit and MO Disks

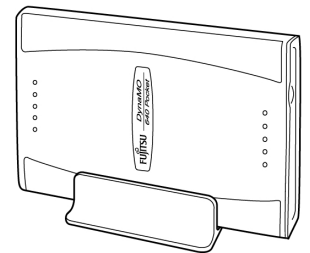
### Handling the MO Drive Unit

#### MO Drive Unit Installation Modes

The unit is designed to be used in a horizontal position, but it can also be used standing upright using the upright stand provided. Do not use any means other than the stand provided to keep the unit in a vertical position as this could render the unit unstable and result in damage to the unit.



Lying flat



Upright

### Handling MO Disks

#### About MO Disk Labels

When affixing labels on MO disks, always use the special labels provided and stick them to the disk in the designated position. Take care also to wipe off any dirt or oil on the disk before sticking on a label. Using labels other than the special labels provided, re-using used labels, or sticking labels onto a soiled surface could cause the label to peel off and then adhere to the inside of the MO drive unit. Extracting such labels is difficult and excessive force should not be used in attempting to remove them. Take the unit to the store where you purchased the unit and request repairs.

## 1-2 2 Notes on Using the MO Drive Unit

- Do not disconnect the USB cable while the MO drive unit is operating (access light blinking).
- Do not eject an MO disk (by pushing the eject button or right-clicking the icon and ejecting) or allow the computer to switch to an energy saving mode, such as stand-by or sleep while the MO drive unit is operating (access light blinking).
  - \* In particular, do not put your computer to sleep while copying files as this could damage the data on the MO disk.
- Do not unplug the optional AC adapter while the MO drive unit is operating (access light blinking).
- If the computer does not recognize your MO drive, unplug the USB cable from your computer, wait a few moments and then plug it back in and try again.
- MO disks formatted in Windows 2000 or Windows XP in the NTFS format cannot be used in other operating systems.
- If you are listening to music or playing back a movie (real time operation) using a USB device (including the MO drive unit), the operation of another USB device (including an MO drive unit) places a large load on the system and may stop, interrupt or restart playback.
- You may need to use the optional AC adapter, depending on the power supply performance provided by your computer's USB bus.
- Use only the USB cable provided. Normal operation is not guaranteed with any other cable.

## 1-2 3 Maintenance

Soiling such as dust, tobacco smoke or ash adhering to your MO drive unit and MO disks can cause their performance to deteriorate and can also cause damage to the unit itself. Regularly clean your MO drive unit and MO disks to ensure that you can continue to use them safely and effectively.

### ① Cleaning your MO Drive Unit

First, disconnect the USB cable connecting the MO drive unit to your computer. Gently wipe away the dust from the body of the unit with a soft dry cloth or a cloth slightly moistened with either water or a neutral detergent. Do not use volatile solvents (benzene, thinners, etc) as they could cause discoloration or deformation of the unit.

- \* Never perform maintenance on your MO drive unit while it is connected to a computer.
- \* Never perform maintenance on your MO drive unit while it is connected to the AC adapter.

### ② Cleaning MO Disks

In general, you should clean your disks using the special cleaner once every three months or so.

- ◆ The time between cleaning differs according to the operating environment and frequency of use.

Product Name	Product Number
Optical Disk Cleaning Kit	CA90003-0702

\* When purchasing cleaning kits, consult the store where you purchased your unit.

## 1-2 4 Using the AC Adapter (Sold Separately)

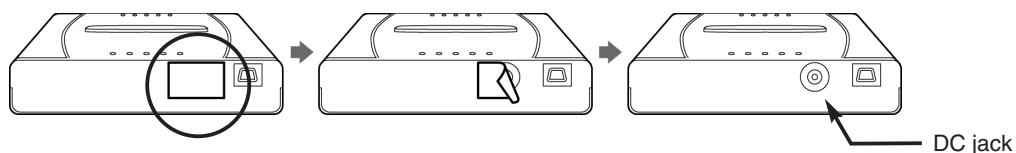
**The optional AC adapter must be connected to the DC jack in the following situation:**

**Where the power supply performance of the computer's USB bus is such that the power is supplied to the MO drive unit is insufficient for it to operate properly.**

Product Name	Product Number
AC Adapter	CA05955-3411

\* When purchasing an AC adapter, consult the store where you purchased your MO drive unit.

\* The DC jack is located on the back of the unit as shown in the figures below. Peel off the sticker before use.



### Follow the steps below to use the AC adapter

1. Connect the AC adapter to the DC jack.
2. Plug the AC adapter into the mains power socket.
3. Connect the USB cable to the MO drive unit.



# 2

## MO Drive Unit Setup

[Return to Table of Contents ▲](#)

*DynaMO*  

---

*640 Pocket*

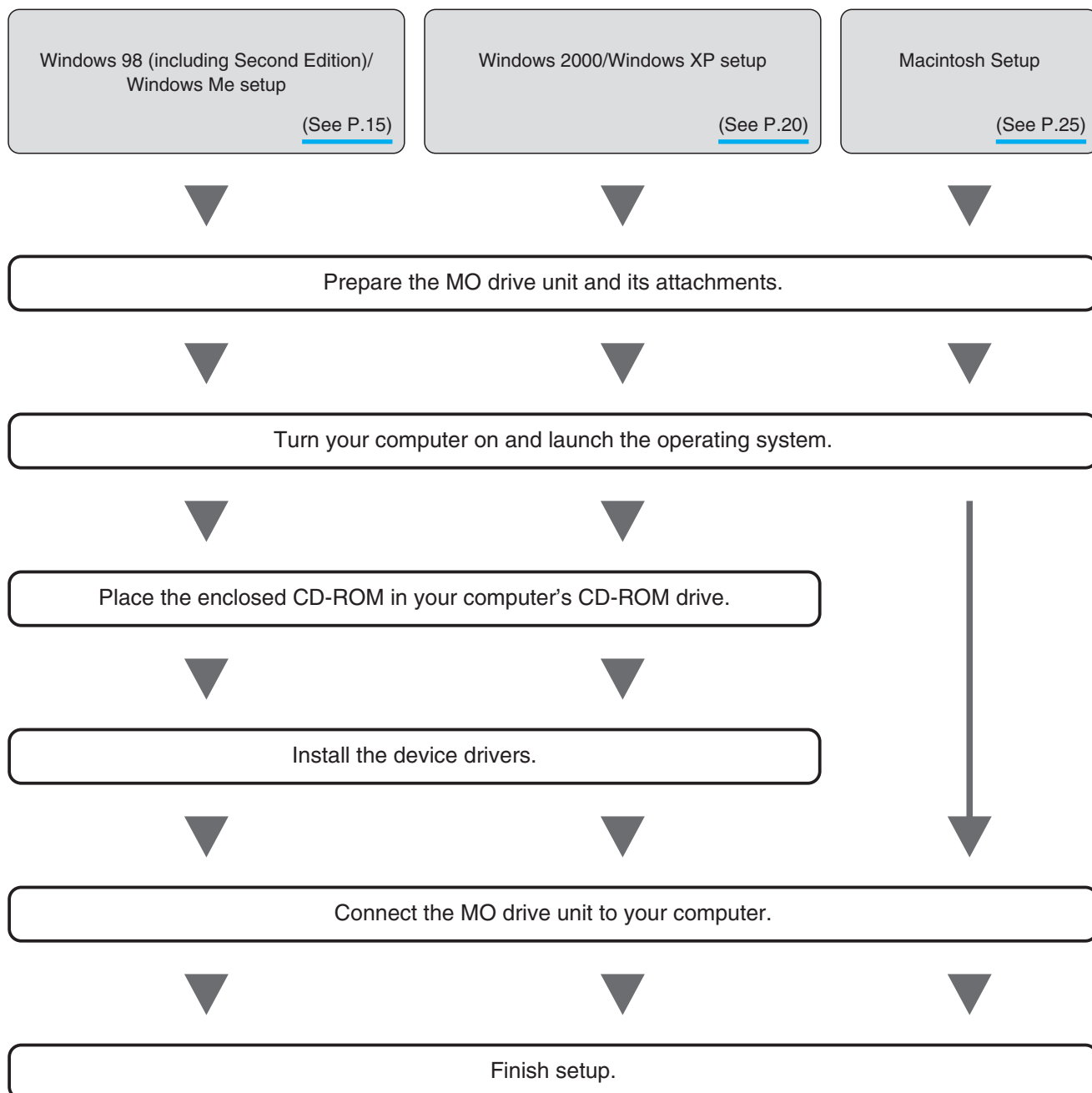


[Return to Table of Contents ▲](#)

### The MO drive unit setup procedure is shown below

Use the appropriate setup procedure for the operating system on your computer.

The screens shown and procedures used in the installation differ for each operating system. Refer to the setup procedure for your operating system.

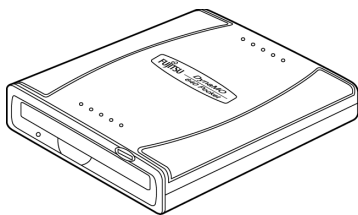


## -2 Setup in Windows 98 (including Second Edition) / Windows Me

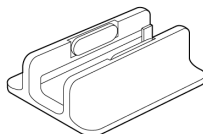
Return to Table of Contents ▲

### 2-2 1 Preparing the MO Drive Unit and its Attachments

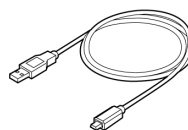
**a** MO drive unit



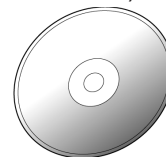
**b** Upright stand



**c** USB cable

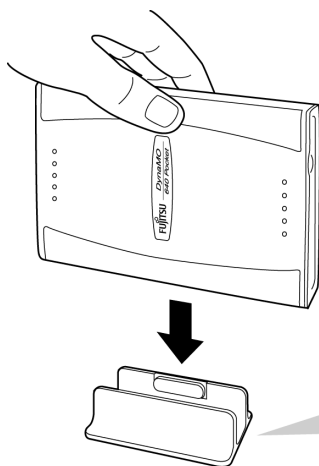


**d** CD-ROM (includes device drivers and manual)

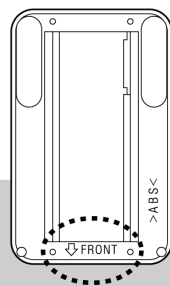


### 2-2 2 MO Drive Unit Orientation

**Upright**

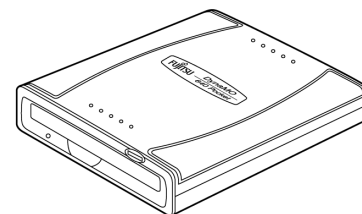


Underside of the upright stand



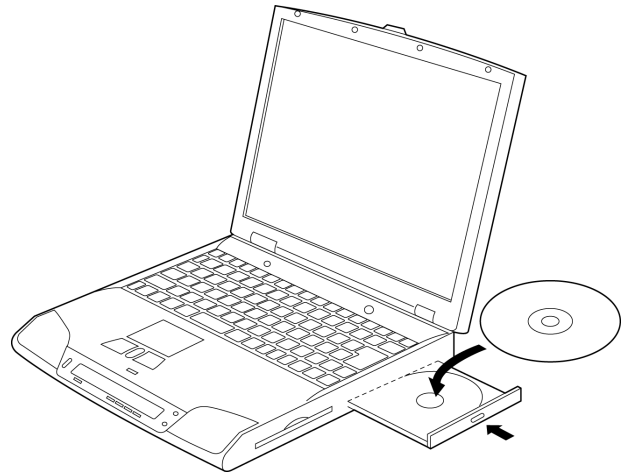
Set up the drive and stand so that "FRONT" on the underside of the upright stand faces forward (towards the disk slot).

**Lying flat**



## 2-2 3 Installing the Device Drivers on your Computer

1. Turn your computer on and insert the enclosed CD-ROM into your computer's CD-ROM drive.



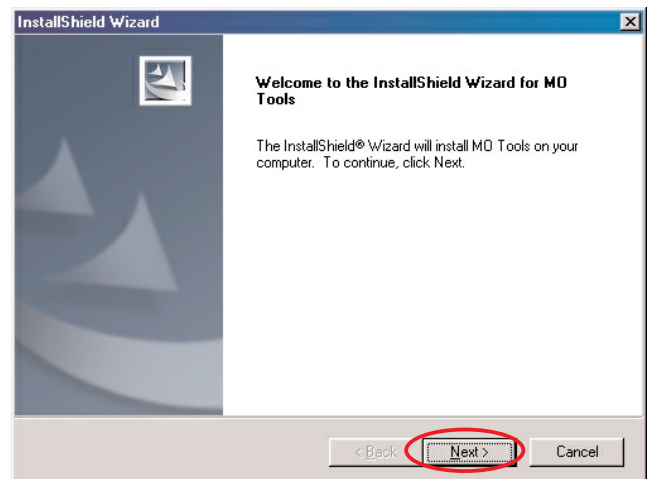
2. Open the CD-ROM drive using Windows Explorer and double-click the following icons.



Setup

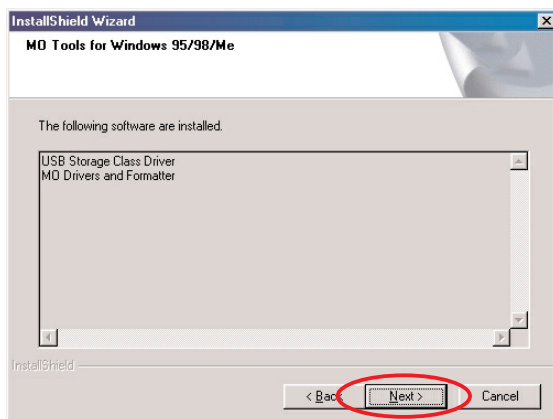
(CD-ROM Drive:\DRIVERS\WIN9X\Setup.exe)

3. After the installation screen appears, click the [Next] button.

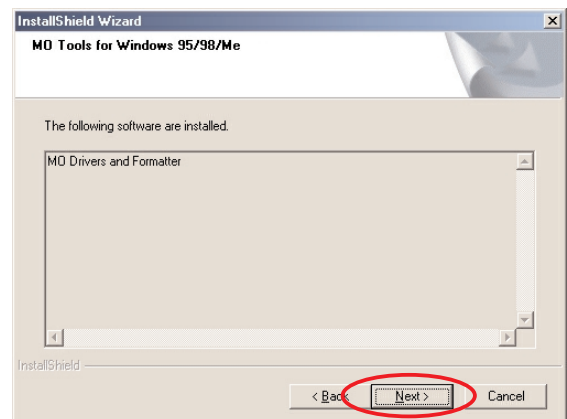


**4.** When the names of the device drivers being installed are displayed, press the [Next] button.

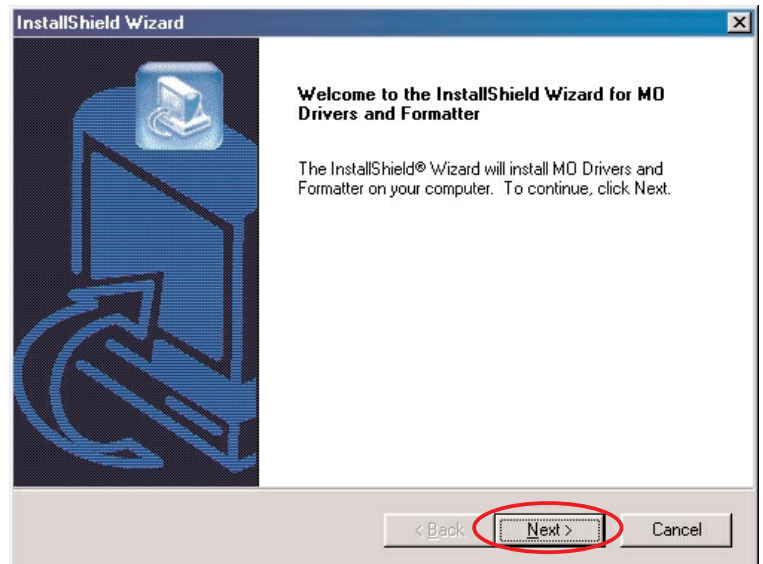
■ In Windows 98



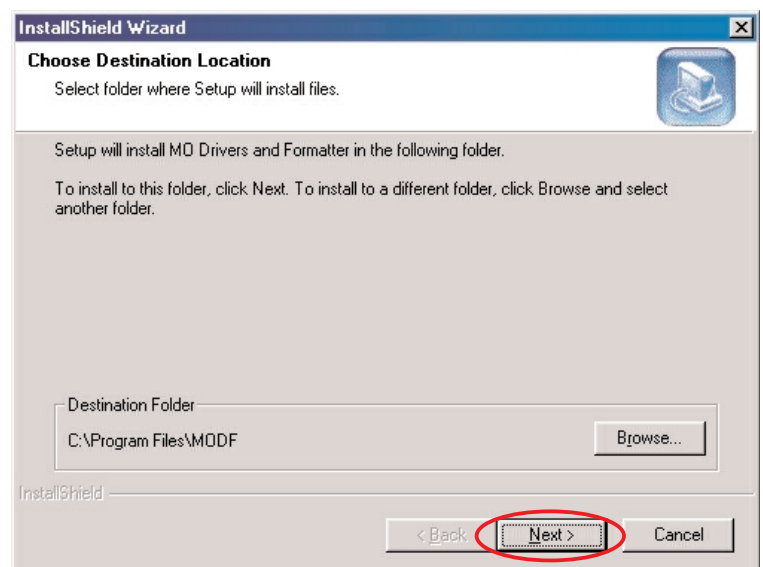
■ In Windows Me



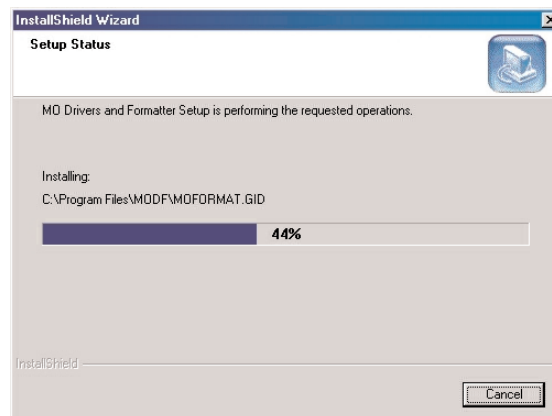
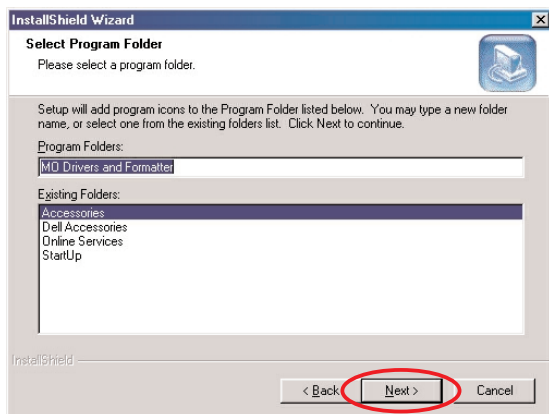
**5.** When the device driver installation screen appears, click the [Next] button.



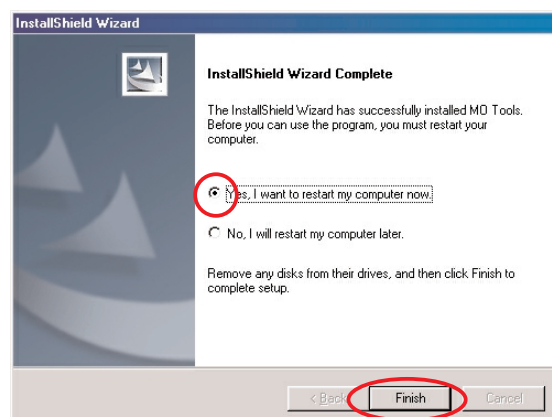
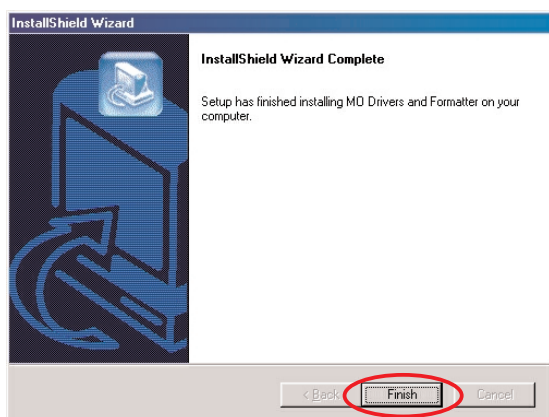
**6.** When the screen for confirming the installation destination appears, simply click the [Next] button.



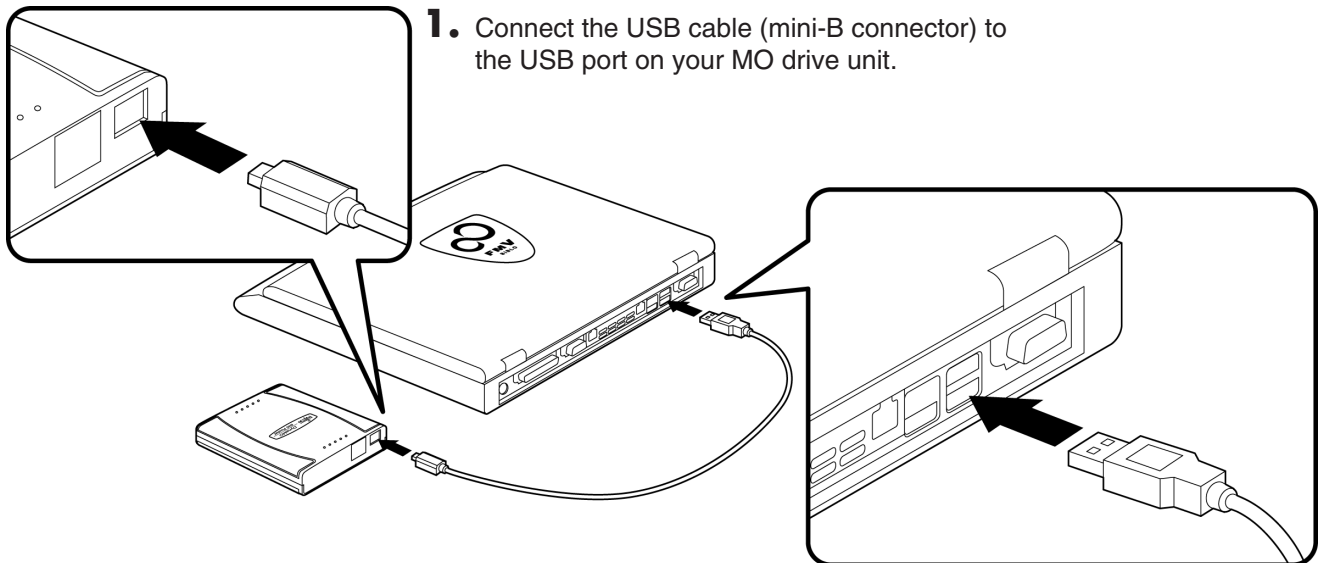
**7.** When the screen for confirming the choice of program folder appears, simply click the [Next] button.



**8.** The installation completion screen then appears. Remove the CD-ROM, click the [Finish] button and then restart the operating system.



## 2-2 4 Connecting the MO Drive Unit to your Computer



**1.** Connect the USB cable (mini-B connector) to the USB port on your MO drive unit.

**2.** Connect the USB cable (A-type connector) to the USB port on your computer.

### Check that the MO Drive Unit is connected correctly

**1.** Double-click the [My Computer] icon on the desktop.



**2.** If a removable disk icon appears, the drive unit has been recognized successfully.

\* If there is no [Removable Disk] icon, disconnect the USB cable from your computer, wait a few moments and then reconnect it. If the icon still does not appear, refer to the "Troubleshooting" section.



#### Note

Once the drivers for this product are successfully installed, the devices listed below are added to the [Device Manager] window.

#### Displaying the Device Manager window

Right-click the [My Computer] icon, click [Properties] and then click [Device Manager] to open the Device Manager window.

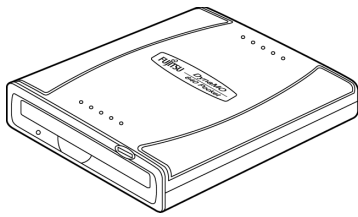
OS Used	Location Added	Added Device Name
Windows 98 (including Second Edition)	Universal Serial Bus Controllers	USB Magneto-Optical Disk Drive (MO Drive)
	Disk Drives	FUJITSU MCN3064UA
	Hard Disk Controllers	Fujitsu USB-MO Drive
Windows Me	Universal Serial Bus Controllers	?USB HIGH CAPACITY STORAGE DEVICE*
	Disk Drives	FUJITSU MCN3064UA
	Storage Devices	USB Disk

\* In Windows Me, a white question mark is displayed inside a green circle. This is because the standard Windows Me drivers were installed. This device will operate properly with these drivers and can be used as is.

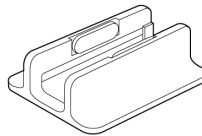
Return to Table of Contents ▲

## 2-3 1 Preparing the MO Drive Unit and its Attachments

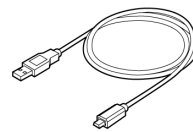
**a** MO drive unit



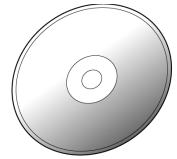
**b** Upright stand



**c** USB cable

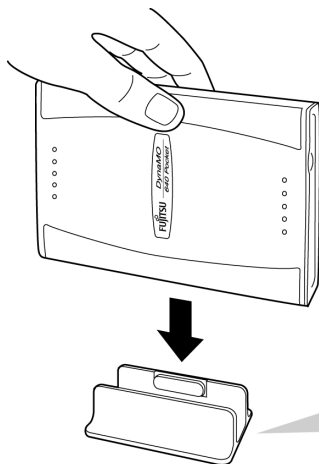


**d** CD-ROM (includes device drivers and manual)

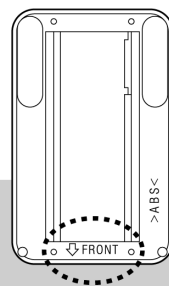


## 2-3 2 MO Drive Unit Orientation

**Upright**

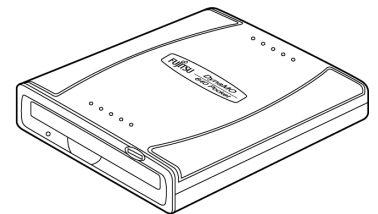


Underside of the upright stand



▲  
Set up the drive and stand so that "FRONT" on the underside of the upright stand faces forward (towards the disk slot).

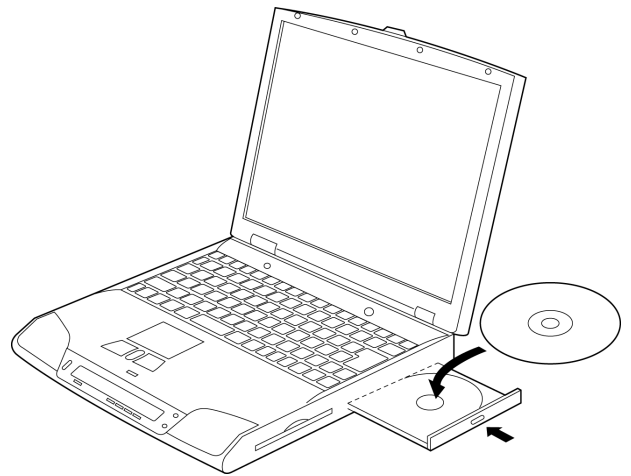
**Lying flat**



## 2-3 3 Installing the Device Drivers on your Computer

To install the device drivers on your computer, log in using “Administrator” privileges or a “Computer Administrator” account.

1. Insert the enclosed CD-ROM into your computer's CD-ROM drive.



2. Open the CD-ROM drive using Windows Explorer and double-click the following icons.

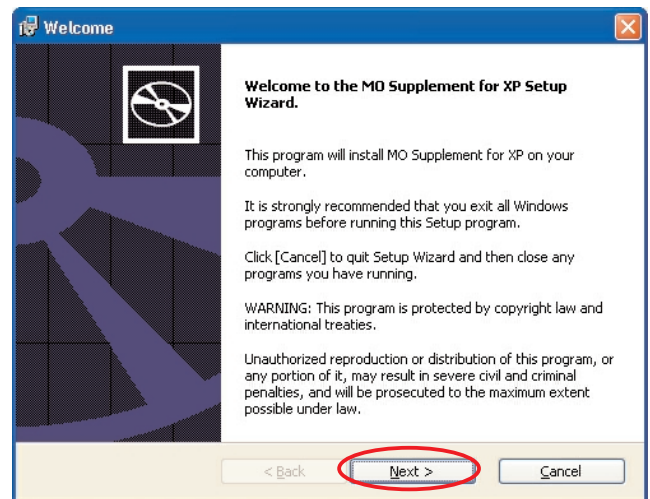


(CD-ROM Drive:\DRIVERS\WINXP\MOSUPPLE\MOSUPPLE.MSI)

(CD-ROM Drive:\DRIVERS\WIN2000\MOSUPPLE\MOSUPPLE.MSI)

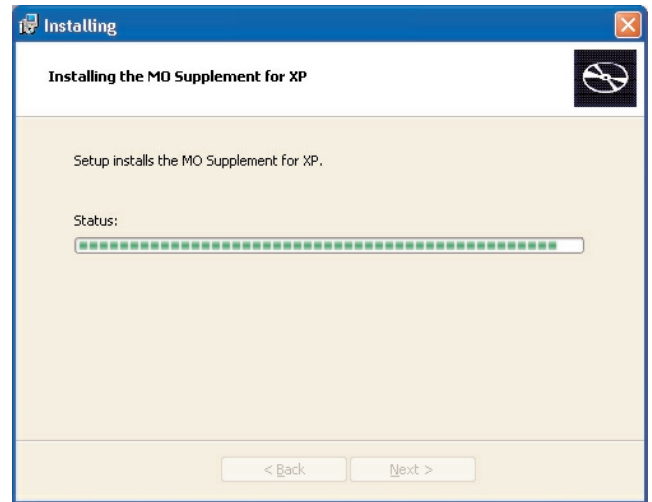
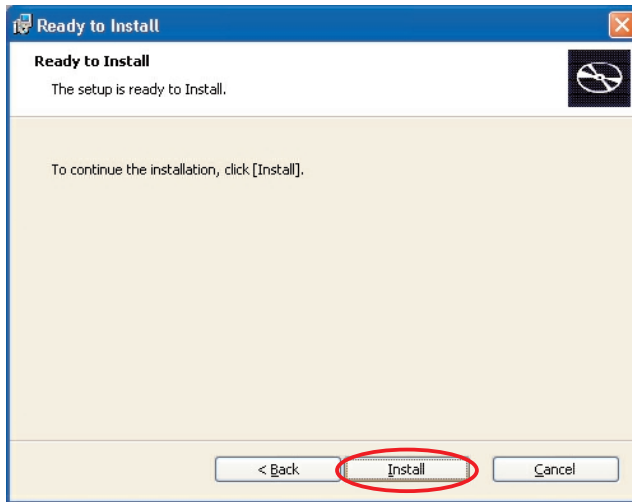
3. When the installation screen appears, click the [Next] button.

\* The screen shown is for Windows XP.

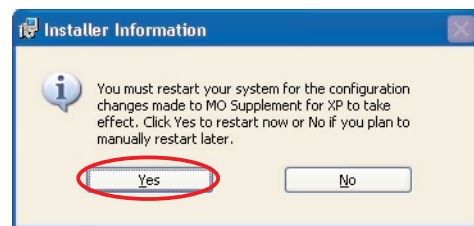
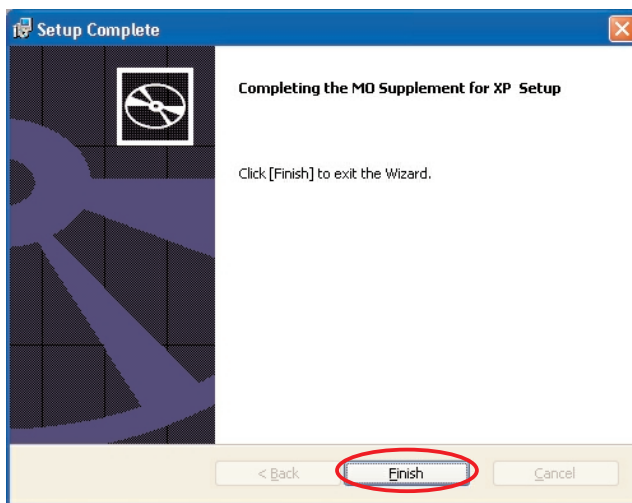




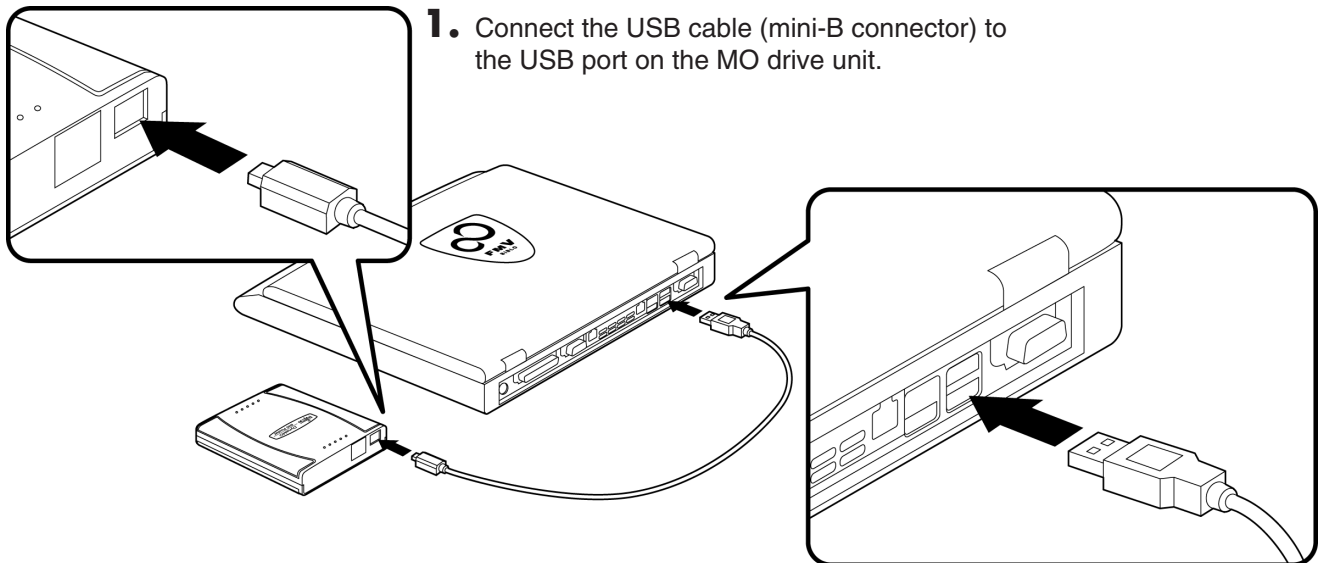
4. When the “Ready to Install” screen appears, press the [Install] button.



5. The installation completion screen then appears. Remove the CD-ROM, click the [Finish] button and then restart the operating system.



## 2-3 4 Connecting the MO Drive Unit to your Computer

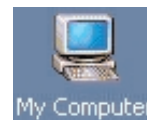


**1.** Connect the USB cable (mini-B connector) to the USB port on the MO drive unit.

**2.** Connect the USB cable (A-type connector) to the USB port on your computer.

### Check that the MO drive unit is connected correctly

- 1.** Open [My Computer].  
\* In Windows XP, select [My Computer] from the [Start] menu.
- 2.** If a removable disk icon appears, the drive unit has been recognized successfully.  
\* If there is no [Removable Disk] icon, disconnect the USB cable from your computer, wait a few moments and then reconnect it. If the icon still does not appear, refer to the "Troubleshooting" section.



Removable Disk (E:)  
Windows 2000



Removable Disk (E:)  
Windows XP

#### Note

Once the drivers for this product are successfully installed, the devices listed below are added to the [Device Manager] window.

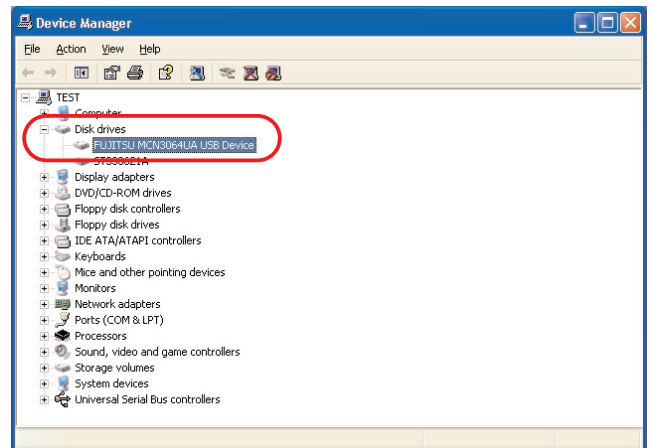
#### Displaying the Device Manager window

- In Windows 2000  
Right-click the [My Computer] icon, click [Properties], click the [Hardware] tab and then click [Device Manager] to open the Device Manager window.
- In Windows XP  
From the [Start] menu, right-click [My Computer], click [Properties], click the [Hardware] tab and then click [Device Manager] to open the Device Manager window.

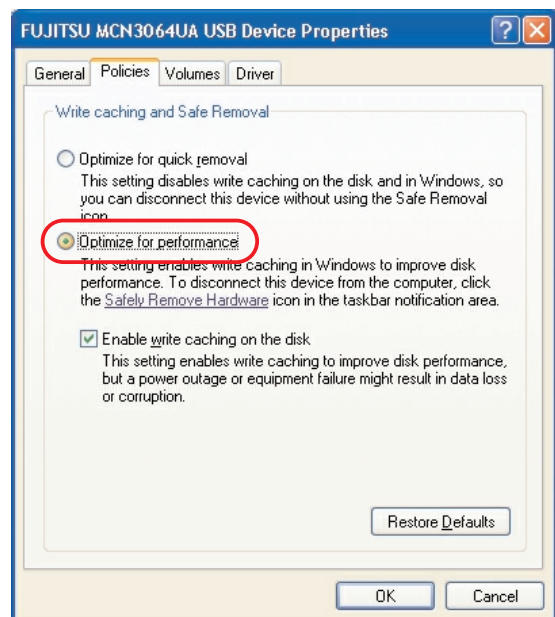
OS Used	Added Location	Added Device Name
Windows 2000/ Windows XP	USB (Universal Serial Bus) Controllers	USB High Capacity Storage Device
	Disk Drives	FUJITSU MCN3064UA USB Device
	Storage Area Volume	General-purpose Volume

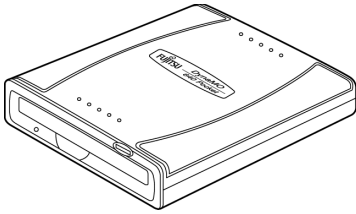
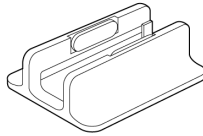
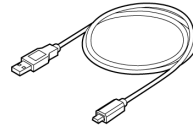
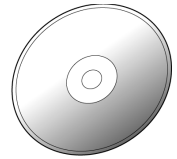
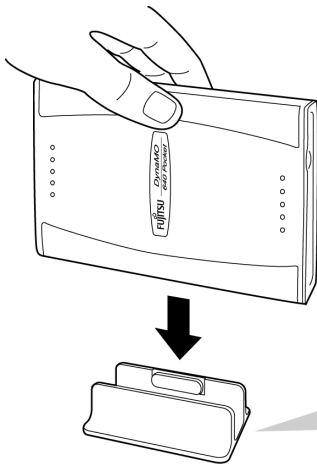
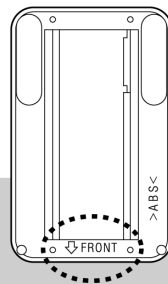
## Important!

- When you connect this product to a PC running Windows XP, the write cache between Windows and the MO drive unit is disabled in the default settings and optimum performance cannot be achieved as a result. To enable the write cache, double-click [FUJITSU MCN3064UA USB Device] from [Disk Drives] in the [Device Manager] window and open the [Properties] window.

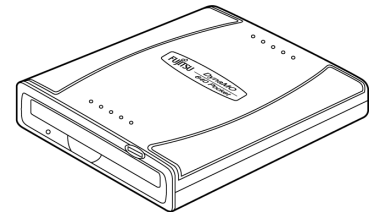


- Select the [Policies] tab from [FUJITSU MCN3064UA USB Device Properties] and tick the box for [Optimize for Performance].



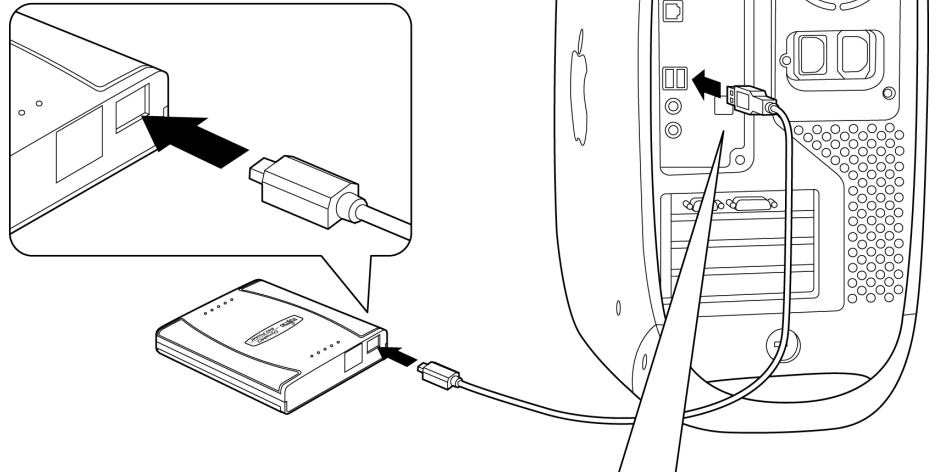
[Return to Table of Contents ▲](#)**2-4 1** Preparing the MO Drive Unit and its Attachments**a** MO drive unit**b** Upright stand**c** USB cable**d** CD-ROM  
(includes manual)**2-4 2** MO Drive Unit Orientation**Upright****Underside of the upright stand**

Set up the drive and stand so that "FRONT" on the underside of the upright stand faces forward (towards the disk slot).

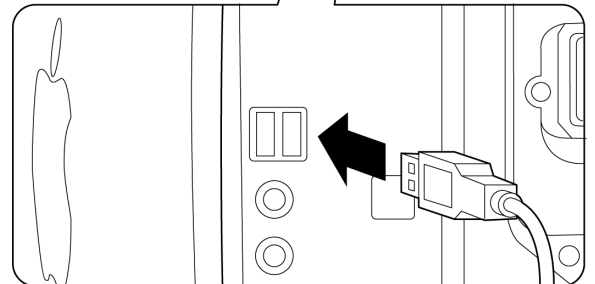
**Lying flat**

## 2-4 3 Connecting the MO Drive Unit to your Computer

1. Connect the USB cable (mini-B connector) to the USB port on the MO drive unit.



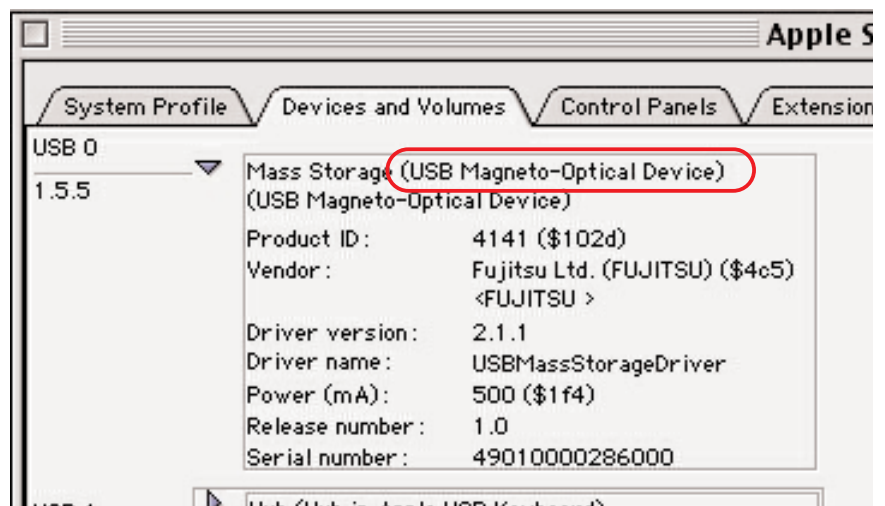
2. Connect the USB cable (A-type connector) to the USB port on your computer.



### Check that the MO drive unit is connected correctly

#### Mac OS 9.0.4 and later

Launch the Apple System Profiler from the Apple Menu, click the [Devices and Volumes] tab and check that High-capacity Storage Device (USB Magneto-Optical Device) is among the USB items listed.

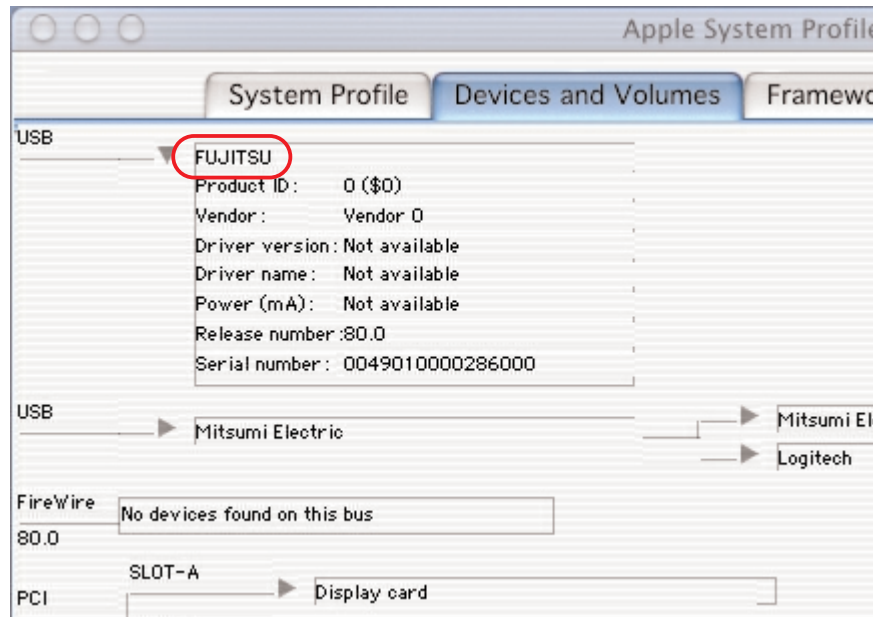


### Mac OS X 10.0.1 and later

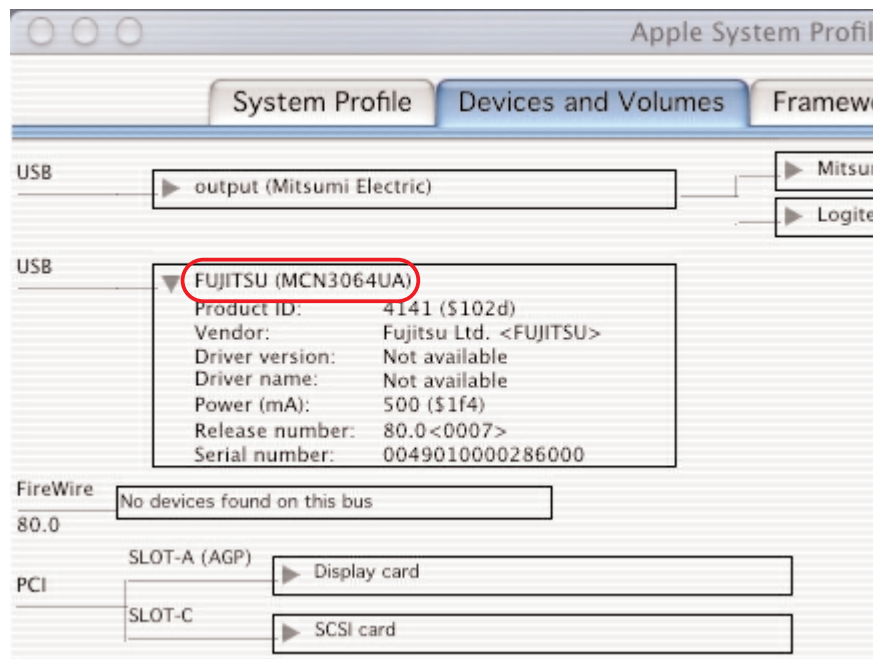
Double-click [Apple System Profiler] inside the [Utilities] folder in the [Applications] folder to launch the Apple System Profiler. Then click the [Devices and Volumes] tab and check that "FUJITSU (MCN3064UA)" is listed among the USB devices.

\* On some versions of Mac OS, only "FUJITSU" may be displayed.

#### ■ In Mac OS X 10.0.x

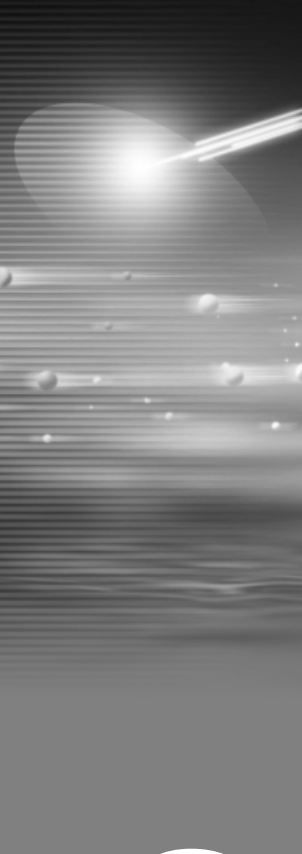


#### ■ In Mac OS X 10.1.x



### ■ Caution

- 1) If the MO drive unit does not appear, disconnect the USB cable from your computer, wait several seconds and then reconnect it. If it still does not appear, refer to the Troubleshooting section.
- 2) Always connect the MO drive unit to your Macintosh's USB port. Operation is not guaranteed if you connect to the USB port on the Apple USB Keyboard or the Apple Monitor.
- 3) The MO drive unit does not support the Sleep or Wake functions. Do not use the Energy Saver functions when using the MO drive unit.
- 4) You cannot launch software from the MO drive unit.
- 5) When shutting down the Mac OS, eject the MO disk first.
- 6) The Multiple Users function in Mac OS 9.0.4 and later is not supported.



# 3

## Using the MO Drive Unit

[Return to Table of Contents ▲](#)

*DynaMO*

---

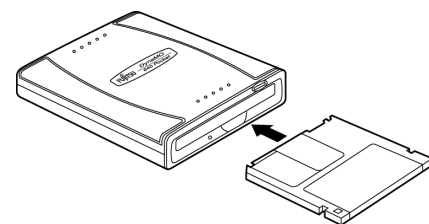
*640 Pocket*



Return to Table of Contents ▲

**3-1 1** Inserting MO Disks

Insert the disk front first into the MO slot. Push it in all the way until you hear it click into place. After an MO disk is inserted, the access light flashes for several seconds. During this time the unit checks the control status of the MO disk and prepares for reading/writing.

**3-1 2** Ejecting MO Disks**Windows 98/Windows Me**

1. Open [My Computer] and right-click the Removable Disk icon.



2. Select [Eject] from the shortcut menu.

3. The MO disk is ejected from the MO drive unit.

**Caution**

- 1) Never eject an MO disk when the MO drive unit access light is flashing.
- 2) If you have a file from the MO disk open, close the file before ejecting the MO disk.

**Using the Eject button to remove disks**

Check that the unit's access light is lit and then press the Eject button.

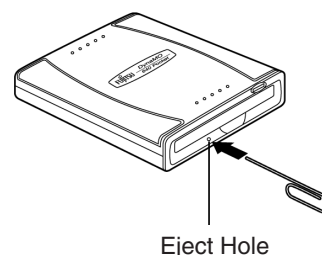
**Caution**

- 1) If the MO drive unit is not recognized correctly, you cannot use the eject button to eject a disk.
- 2) Even after writing has finished on the computer, the MO drive unit may continue to operate using the cache writing function. To ensure that your data is safely preserved, use the option in right-click menu to eject the MO disk.

**Using the ejector pin to remove disks**

If you cannot eject a disk in the normal way due to a problem of some kind, eject the disk by inserting the ejector pin into the manual eject hole. First disconnect the USB cable from the MO drive unit, and turn the MO drive unit off. Insert the ejector pin into the manual eject hole and press with moderate force to eject the disk.

\* You can create the ejector pin by straightening a common paper clip.





## Windows 2000/Windows XP

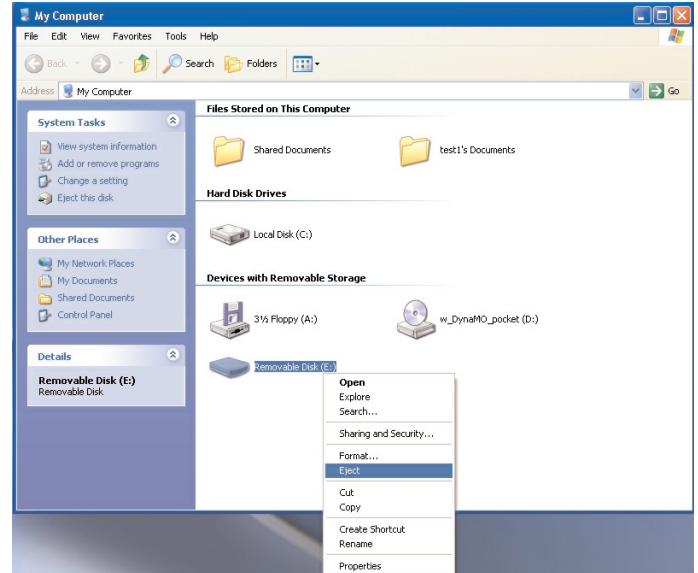
Log on using an account with administrator privileges. If you are not logged on, refer to [page 31](#) and change your privileges using the Format/Eject Privilege Modification Tool.

### Ejecting a Disk

1. Open [My Computer] and right-click the Removable Disk icon.  
\* The screen shown is for Windows XP.
2. Select [Eject] from the shortcut menu.
3. The MO disk is ejected from the MO drive unit.

#### ■ Caution

- 1) Never eject an MO disk when the MO drive unit access light is flashing.
- 2) If you have a file from the MO disk open, close the file before ejecting the MO disk.



#### ● Using the Eject button to remove disks

Check that the unit's access light is lit and then press the Eject button.

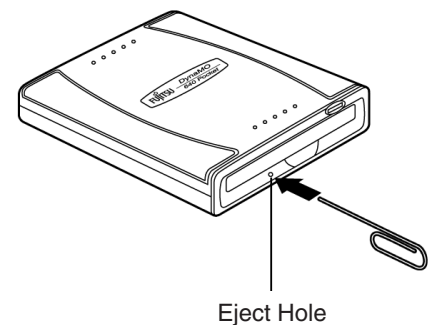
#### ■ Caution

- 1) If the MO drive unit is not recognized correctly, you cannot use the eject button to eject a disk.
- 2) Even after writing has finished on the computer, the MO drive unit may continue to operate using the cache writing function. To ensure that your data is safely preserved, use the option in right-click menu to eject the MO disk.

#### ● Using the ejector pin to remove disks

If you cannot eject a disk in the normal way due to a problem of some kind, eject the disk by inserting the ejector pin into the manual eject hole. First disconnect the USB cable from the MO drive unit, and turn the MO drive unit off. Insert the ejector pin into the manual eject hole and press with moderate force to eject the disk.

\* You can create the ejector pin by straightening a common paper clip.



### Format/Eject Privilege Modification Tool

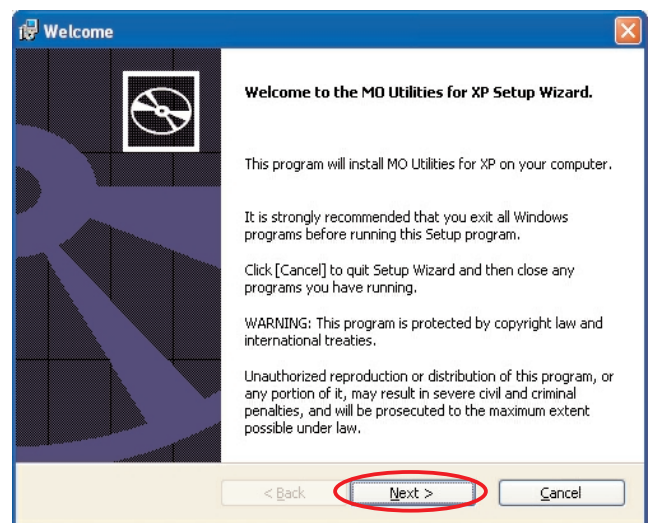
In Windows 2000 or Windows XP, you can only format or eject an MO disk if you log on to an account with administrator privileges.

The Format/Eject Privilege Modification Tool allows you to format or eject disks from an account that does not have disk formatting or ejecting privileges. However, the Format/Eject Privilege Modification Tool can only be run only from an account with administrator privileges.

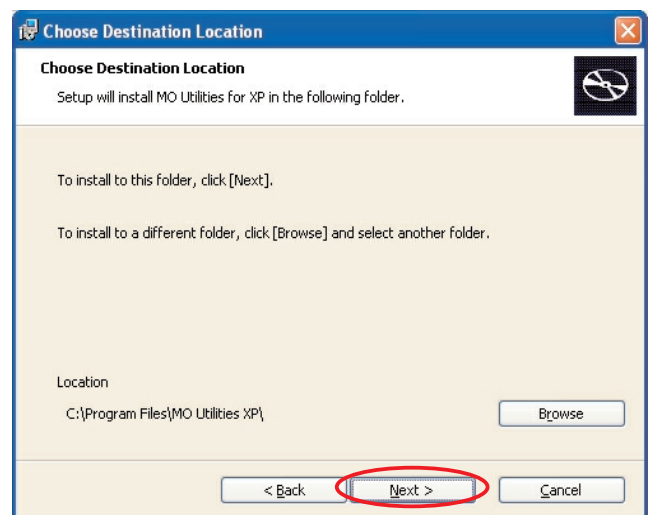
### Installing the Format/Eject Privilege Modification Tool

To install the Format/Eject Privilege Modification Tool on your computer, first log on with administrator privileges or using a “Computer Administrator” account.

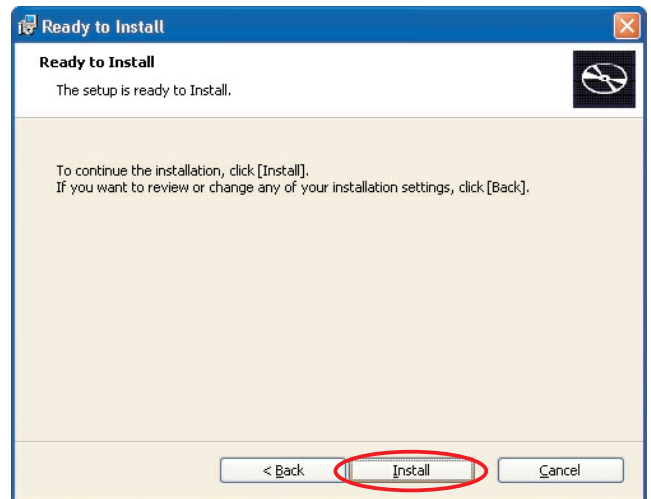
1. Connect the MO drive to the computer and insert the enclosed CD-ROM into the computer's CD-ROM drive.
2. Open [My Computer], right-click the CD-ROM icon and click [Open].  
\* If the CD-ROM menu launches automatically, click the [Exit] button to exit the menu.
3. ● Windows 2000  
Double-click [MOFORMAT.MSI] in the [MOUTY] folder located inside the [WIN2000] folder in the [DRIVERS] folder.  
● Windows XP  
Double-click [MOUTY.MSI] in the [MOUTY] folder located inside the [WINXP] folder in the [DRIVERS] folder.
4. When the Begin Installation screen appears, simply press the [Next] button.  
\* The screen shown is for Windows XP.



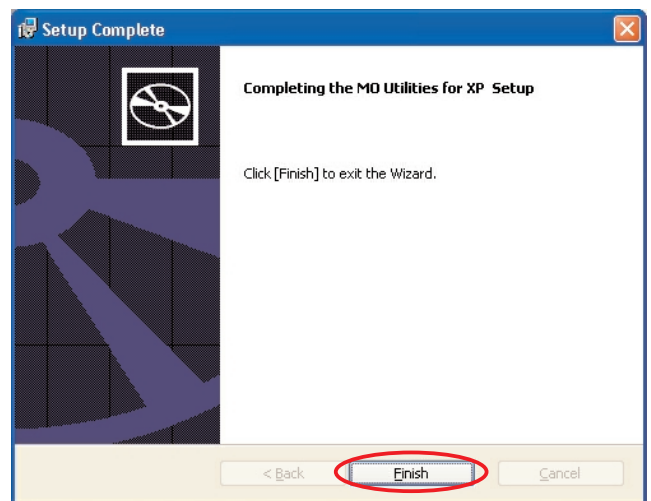
5. The screen for selecting the installation location then appears. Simply click the [Next] button.



6. When the Begin Installation screen appears, simply press the [Install] button.



7. The installation completion screen then appears. Simply click the [Finish] button.



### Using the Format/Eject Privilege Modification Tool

Log on using an account that has formatting privileges. If you are not logged on, use the procedure below to select format/eject.

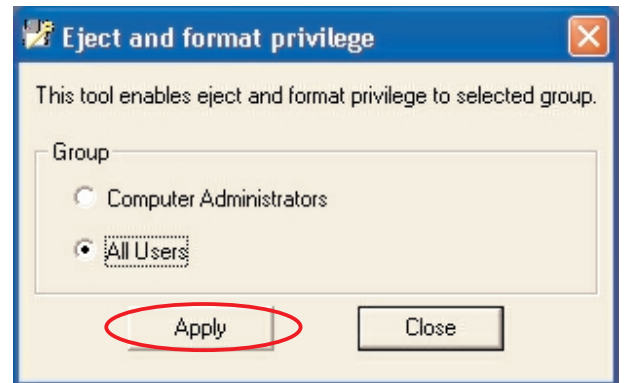
\* If you have not installed the Format/Eject Privilege Modification Tool, install it now. See [P.31](#) for the installation procedure.

1. Select [MO Utilities for XP] from [Programs] in the [Start] menu in the taskbar, then click [Eject and format privilege].

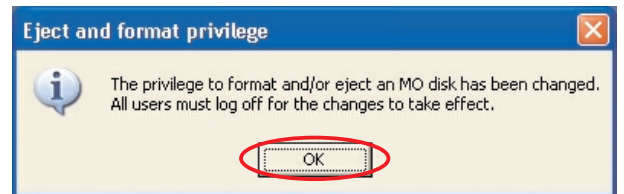
\* The screen shown is for Windows XP.



- From the group shown, select an account that permits disk format and eject and then click the [Apply] button.



- Click the [OK] button and restart the computer. The new privileges will apply after the computer restarts.

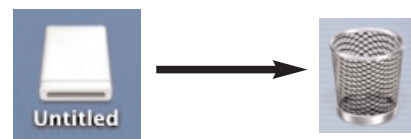
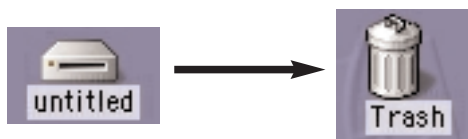


## Macintosh

- Drag the MO disk icon on the desktop into the Trash.

■ Mac OS 9.0.4

■ Mac OS X 10.0.x or later



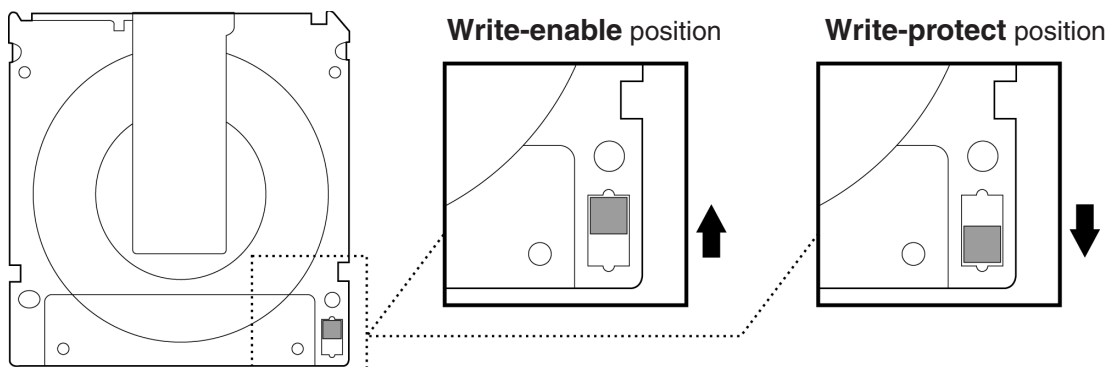
- The MO disk is ejected from the MO drive unit.

### ■ Caution

- Never eject an MO disk when the access light on the MO drive unit is flashing.
- You cannot use the eject button on the MO drive unit to eject MO disks.
- If you have a file from the MO disk open, close the file before ejecting the MO disk.

## 3-1 3 Write-protecting MO Disks

To prevent the inadvertent erasing of data written to an MO disk, you can write-protect your disks. Move the tab on the back of the MO disk to the Write-protect position. To write additional data to the disk, move the tab back to the Write-enable position.



# 3-2 Formatting MO Disks

[Return to Table of Contents ▲](#)

## 3-2-1 On Windows Systems

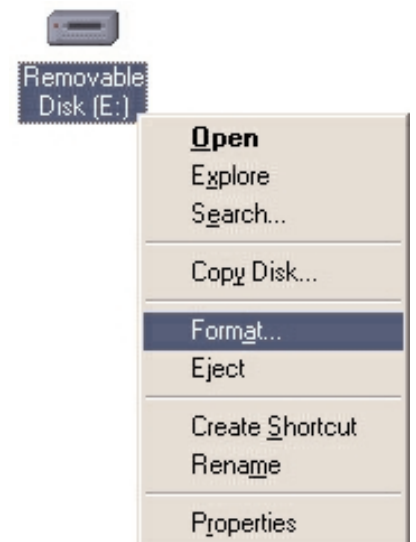
### ■ Caution

- 1) Formatting an MO disk erases all the data on the disk. Before formatting a disk, always check carefully that it contains no data that you want to retain.
- 2) The MO Disk Formatter utility can also be used to MO disks on Windows systems (excluding Windows XP).

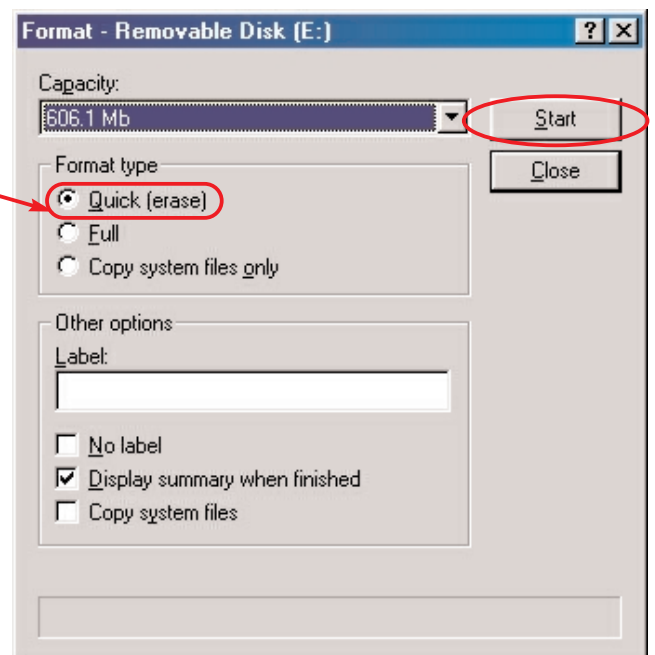
## Windows 98/Windows Me

### Formatting an MO Disk

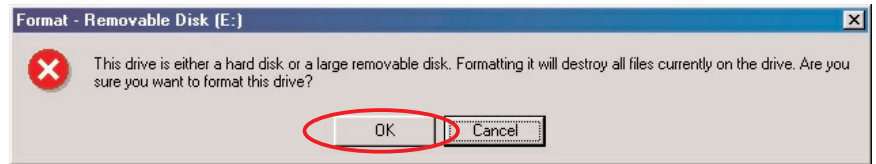
1. Insert the MO disk into the MO drive unit.
2. Double-click [My Computer] on the desktop to open the My Computer window and then select [Removable Disk].
3. Right-clicking [Removable Disk] displays a shortcut menu. Select Format from the menu.



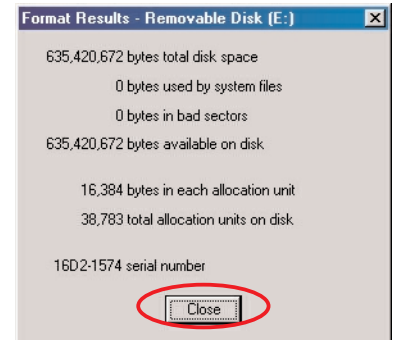
4. If required, enter a title for your MO disk in the optional volume label field and then press the [Start] button.
  - \* Volume labels can include up to 11 characters.
  - When formatting an MO disk that has been formatted before, you can select Quick format to format the disk in a shorter time.



5. A warning message is displayed. Check the message and click OK if you wish to continue formatting. Formatting then begins.



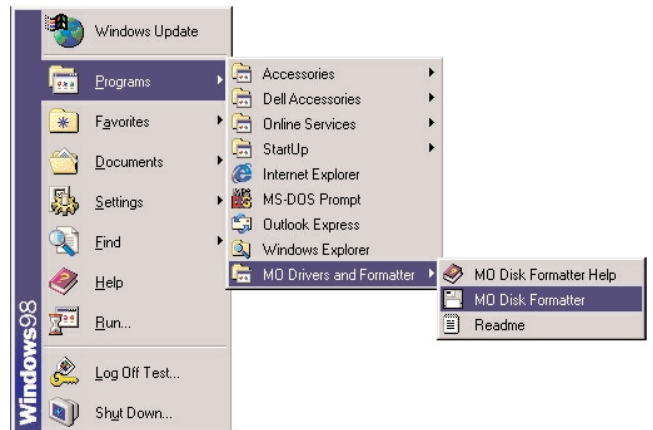
6. If formatting is completed successfully, a message to that effect appears. Click the [Close] button.



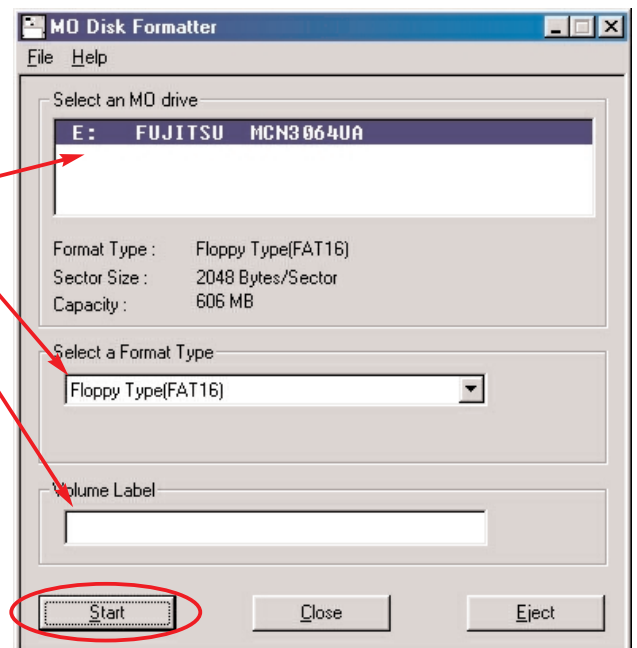
### Formatting an MO disk using the MO Formatter

You can also use the MO Disk Formatter to format MO disks on Windows systems (excluding Windows XP). Using the MO Disk Formatter allows you to format disks in the FAT32 format in Windows 98 or Windows Me.

1. Click the [Start] button in the taskbar. Select the [Program] menu. Select [MO Drivers and Formatter] and click [MO Disk Formatter].
2. Insert an MO disk into the MO drive unit.



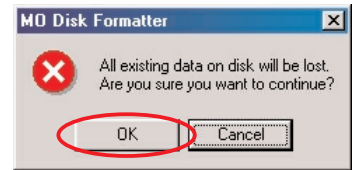
3. Select the MO drive unit on which the formatting will be performed, choose the format to be used and then enter a volume label, if required.
  - (1) Select the MO drive unit on which the formatting will be performed. (On the screen, the DynaMO 640 Pocket (DMO-640PT) is selected.)
  - (2) Select the format to be used.
  - (3) If required, enter a title for your MO disk in the Volume Label field.  
\* Volume labels can include up to 11 characters.
4. After you have completed the settings, click the [Start] button.





Return to Table of Contents ▲

5. A warning message is displayed. Check the message and click OK if you wish to continue formatting. Formatting then begins.
6. If formatting is completed successfully, a message to that effect appears. Click the [OK] button.

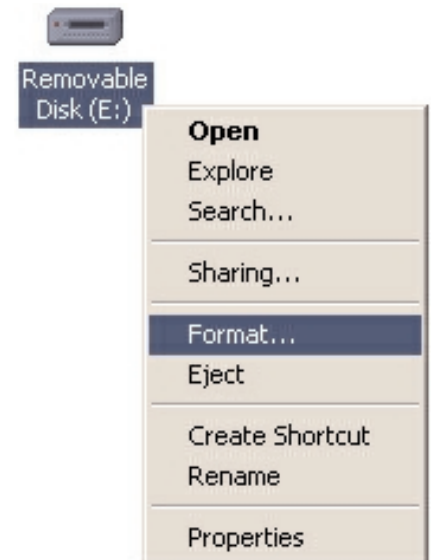


## Windows 2000

Log on using an account that has formatting privileges. If you are not logged on, refer to [page 31](#) and change your privileges using the Format/Eject Privilege Modification Tool.

### Formatting an MO Disk

1. Insert the MO disk into the MO drive unit.
2. Double-click [My Computer] on the desktop to open the My Computer window and then select [Removable Disk].
3. Right-clicking [Removable Disk] displays a shortcut menu. Select Format from the menu.



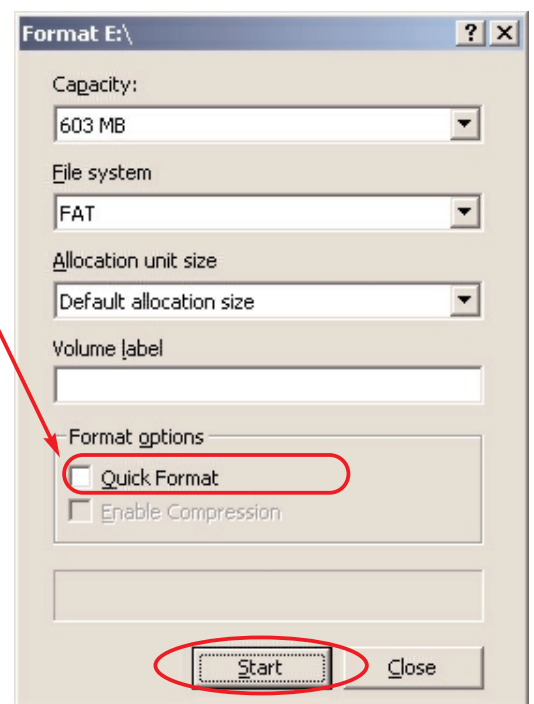
4. Select the file system format, and then, if required, enter a title for your MO disk in the volume label box and click the [Start] button. Do not format MO disks in the NTFS format.

\* Volume labels can include up to 11 characters.

- When formatting an MO disk that has been formatted before, you can select Quick Format to format the disk in a shorter time.

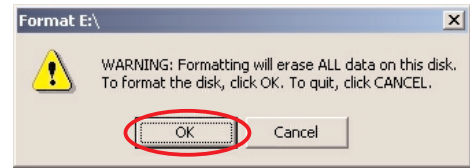
#### ■ Caution

- Because MO disks formatted in the NTFS format in Windows 2000 or Windows XP cannot be used in other operating systems, do not select NTFS.

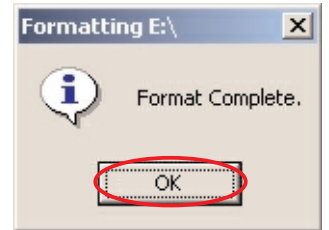


Return to Table of Contents ▲

5. A warning message is displayed. Check the message and click OK if you wish to continue formatting. Formatting then begins.



6. If formatting is completed successfully, a message to that effect appears. Click the [OK] button.

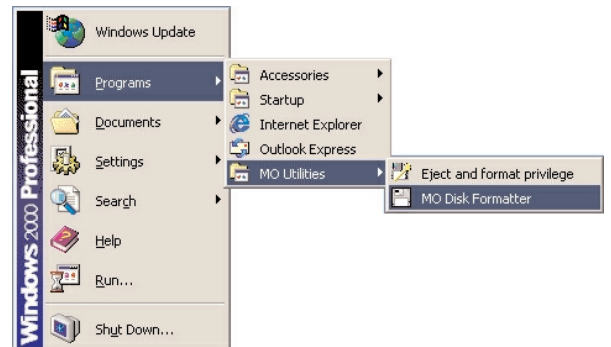


## Formatting an MO disk using the MO Formatter

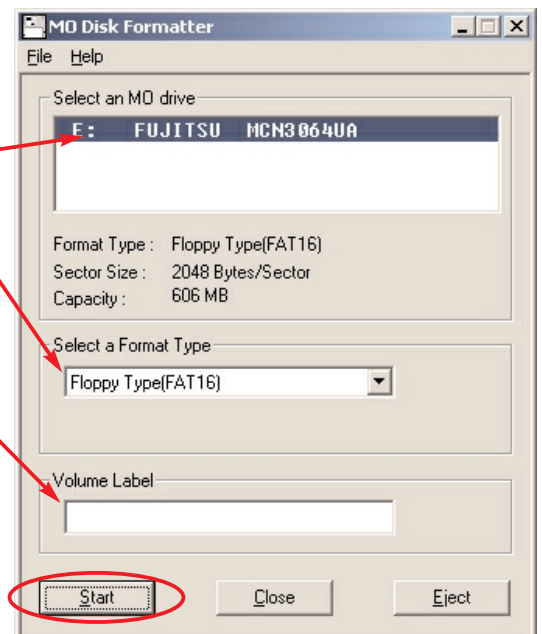
### ■ Caution

- To use the MO Formatter, you must first install the Format/Eject Privilege Modification Tool. (See page 31.)

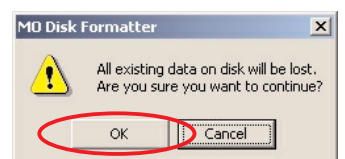
1. Select the [Start] menu in the taskbar.  
Select the [Program] menu.  
Select the [MO Utilities] menu.  
Click [MO Disk Formatter].



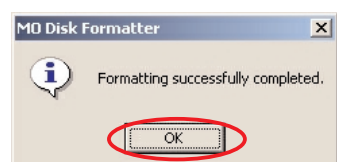
2. Insert an MO disk into the MO drive unit.
3. Select the MO drive unit on which the formatting will be performed, choose the format to be used and then enter a volume label, if required.
  - (1) Select the MO drive unit on which the formatting will be performed. (On the screen, the DynaMO 640 Pocket (DMO-640PT) is selected.)
  - (2) Select the format to be used.
  - (3) If required, enter a title for your MO disk in the Volume Label field.  
\* Volume labels can include up to 11 characters.
4. After you have completed the settings, click the [Start] button.



5. A warning message is displayed. Check the message and click OK if you wish to continue formatting. Formatting then begins.



6. If formatting is completed successfully, a message to that effect appears. Click the [OK] button.



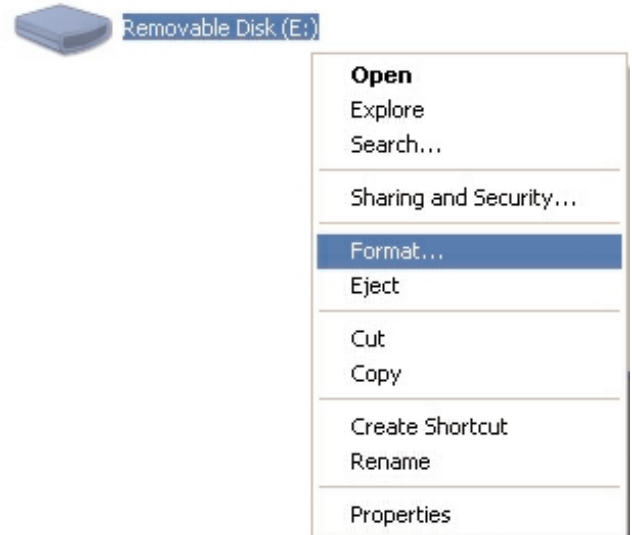


## Windows XP

Log on using an account with formatting privileges. If you are not logged on, refer to page 31 and change your privileges using the Format/Eject Privilege Modification Tool.

### Formatting an MO Disk

1. Insert the MO disk into the MO drive unit.
2. Double-click [My Computer] in the [Start] menu in the taskbar to open the My Computer window and then select [Removable Disk].
3. Right-clicking [Removable Disk] displays a shortcut menu. Select Format from the menu.



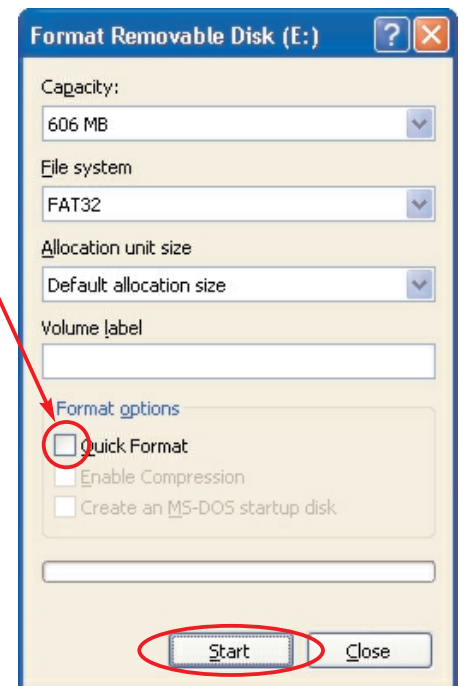
4. Select the file system format, and then, if required, enter a title for your MO disk in the volume label box and click the [Start] button. However, do not format MO disks in the NTFS format.

\* Volume labels can include up to 11 characters.

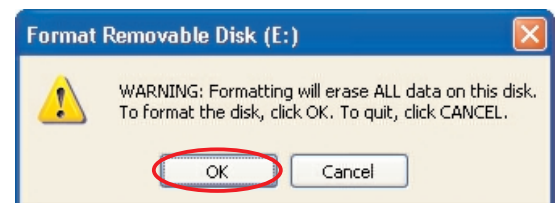
- When formatting an MO disk that has been formatted before, you can select Quick Format to format the disk in a shorter time.

#### ■ Caution

- Because MO disks formatted in the NTFS format in Windows 2000 or Windows XP cannot be used in other operating systems, do not select NTFS.



5. A warning message is displayed. Check the message and click OK if you wish to continue formatting. Formatting then begins.



6. If formatting is completed successfully, a message to that effect appears. Click the [OK] button.



## 3-2 2 On Macintosh Systems

### ■ Caution

- Formatting an MO disk erases all the data on the disk. Before formatting a disk, always check carefully that it contains no data that you want to retain.

### Mac OS 9.0.4 or later

1. Insert the MO disk into the MO drive unit. If you insert an MO disk that has not been formatted, an initialization dialog box appears on the desktop. To reformat an MO disk that has already been formatted, select the MO Disk and then select [Format Disk] from the Special menu.
2. If you wish to give the MO disk a name, enter the name in the box.
3. Select either [Mac OS Standard] or [Mac OS Extended] as the format to be used.
4. Click [Initialize] to begin formatting.
5. If formatting is completed successfully, the MO disk icon appears on the desktop.



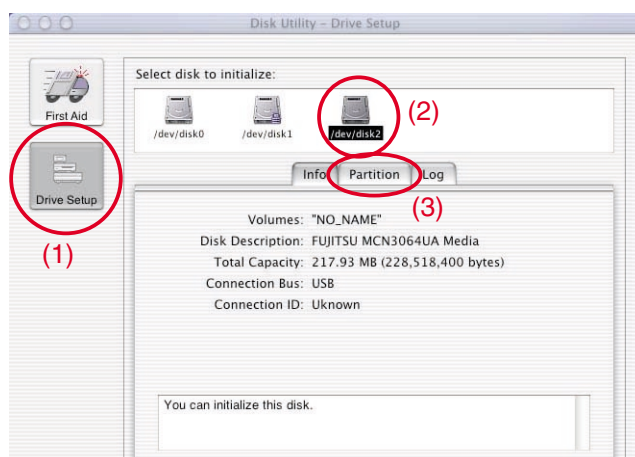
### ■ Caution

- 1) The Mac OS Standard or Mac OS Extended format should be used for Macintosh formatting. Note that the Mac OS Extended format cannot be used with Mac OS 8.1 or earlier systems.
- 2) 640 MB MO disks formatted on Windows systems cannot be used on Macintosh computers.

### Mac OS X

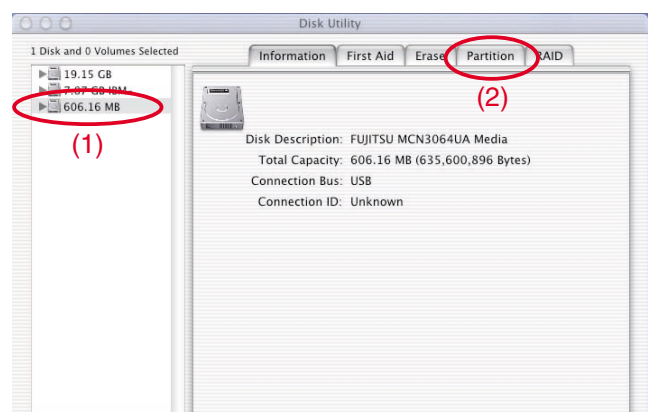
1. Insert the MO disk into the MO drive unit. If you insert an MO disk that has not been formatted, an initialization dialog box appears on the desktop. To reformat an MO disk that has already been formatted, double-click [Disk Utility] in the Utilities folder located inside the Applications folder of the startup disk.
2. Select the MO drive and then click the [Partition] tab in the sequence shown below.

#### ■ Mac OS X 10.0.x



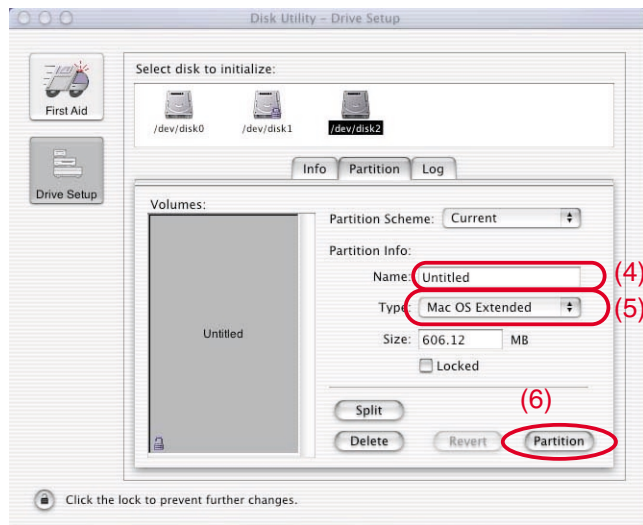
- (1) Click [Drive Setup].
- (2) Click the disk to be formatted.
- (3) Click the [Partition] tab.

#### ■ Mac OS X 10.1.x



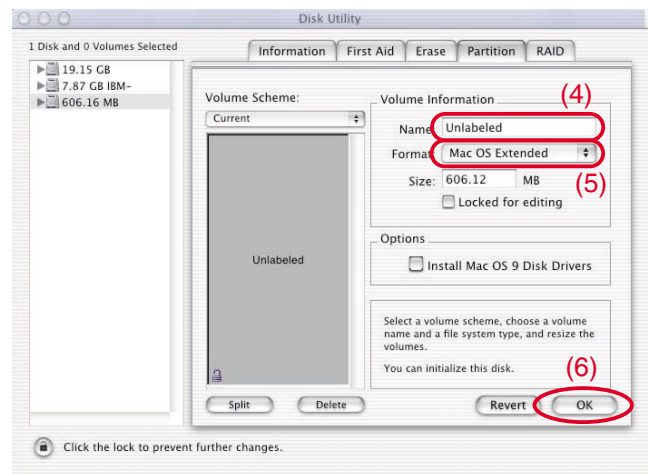
- (1) Click the disk to be formatted.
- (2) Click the [Partition] tab.

## Mac OS X 10.0.x



- (4) To name your MO disk, enter the name and then press the [return] key.
- (5) Select the format to be used.
- (6) Click the [Partition] button.

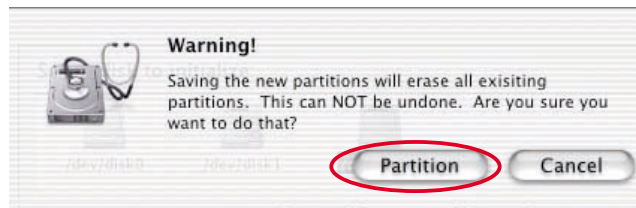
## Mac OS X 10.1.x



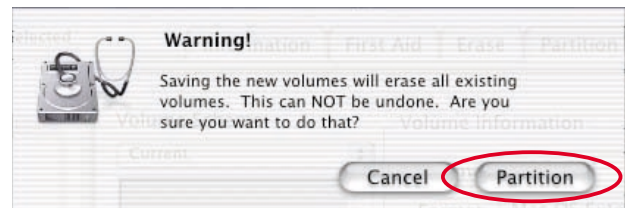
- (4) To name your MO disk, enter the name and then press the [return] key.
- (5) Select the format to be used.
- (6) Click the [OK] button.

**3.** A warning message appears. Check the message and click the [Partition] button if you wish to continue formatting. Formatting then begins.

## Mac OS X 10.0.x



## Mac OS X 10.1.x



**4.** If formatting is completed successfully, the MO disk icon appears on the desktop. Exit [Disk Utility].

## Caution

- 1) When you are using an MO disk in Mac OS X, you are strongly advised to use a single partition in the Mac OS Extended format. Note that the Mac OS Extended format cannot be used with Mac OS 8.1 or earlier systems.
- 2) 640 MB MO disks formatted on Windows systems cannot be used on Macintosh computers.

[Return to Table of Contents ▲](#)

## Use the procedures given below to disconnect the USB cable from the MO drive unit while the computer is running

### ■ Caution

- 1) Only disconnect the MO drive unit once the MO disk has been ejected.
- 2) Never disconnect the MO drive while files are being copied or if a file is open.


3-3

## 1 On Windows Systems

### Windows 98 (including Second Edition)

To disconnect the MO drive unit, first eject the MO disk and then disconnect the USB cable.

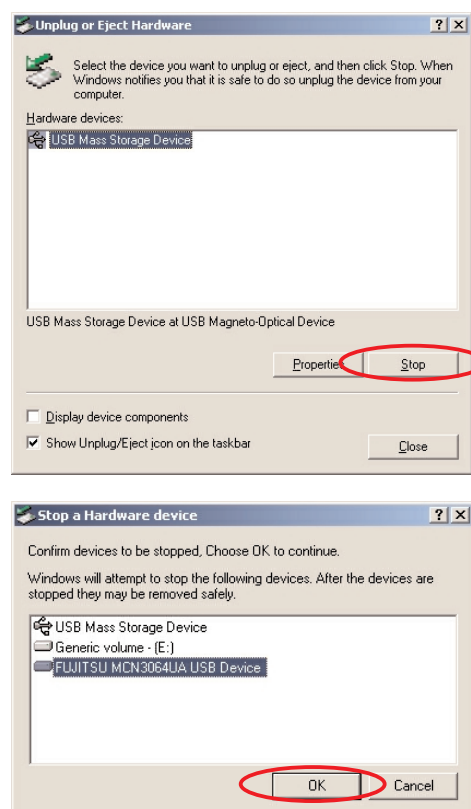
### Windows Me, Windows 2000 or Windows XP

1. If there is an MO disk in the MO drive unit, eject the MO disk.
2. Click the  icon displayed in the task tray.
3. Click the message shown below in the menu that appears.
  - Windows Me ..... “Stop USB disk drive.”
  - Windows 2000 ..... “Stop USB high-capacity storage device drive.”
  - Windows XP ..... “It is safe to remove the USB high-capacity storage device drive.”
4. The dialog box shown below appears. Click the [Stop] button and then select the device and click the [OK] button.

#### ■ Windows Me



#### ■ Windows 2000

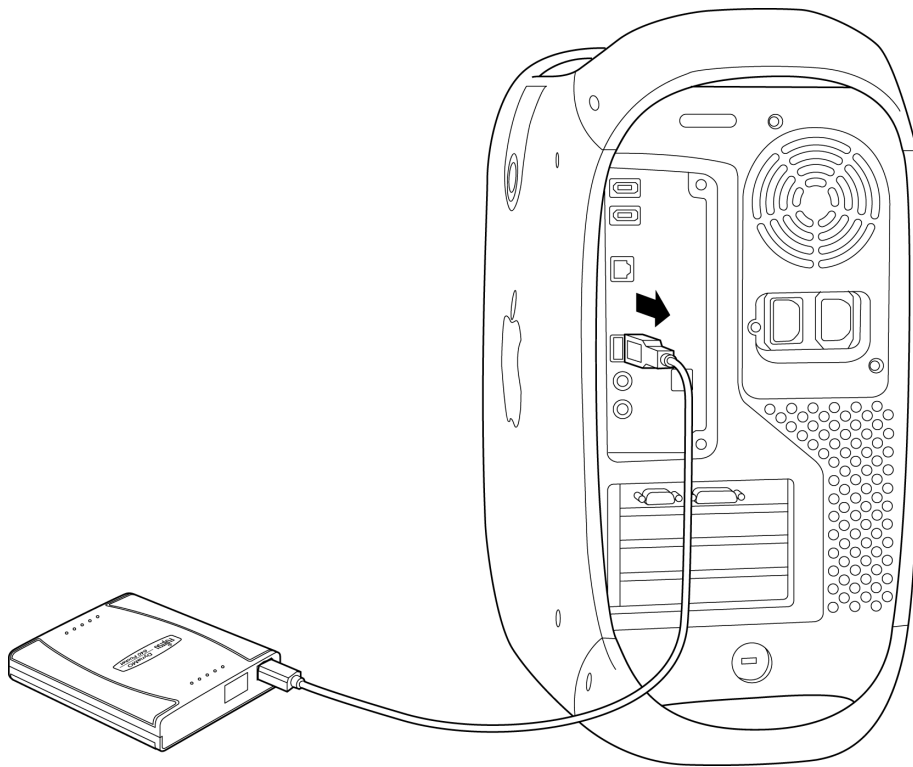


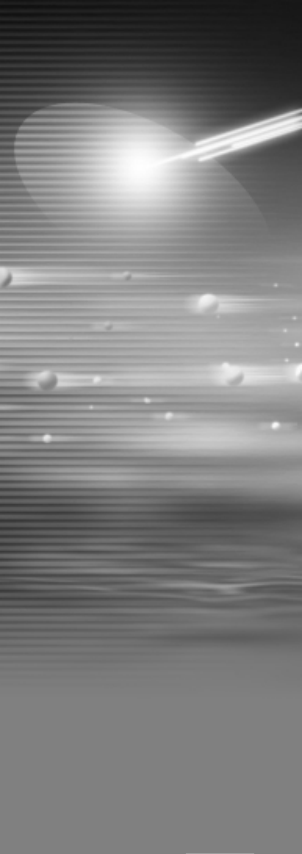
5. A message appears saying that the preparations for disconnection have been completed. Once you have clicked the OK button you can disconnect the USB cable from your computer.



## 3-3 **2** On Macintosh Systems

1. If there is an MO disk in the MO drive unit, eject the MO disk by dragging the MO disk icon to the Trash.
2. Disconnect the USB cable from the USB port on the Macintosh.





# 4

## Uninstalling Device Drivers

[Return to Table of Contents ▲](#)

*DynaMO*

---

*640 Pocket*



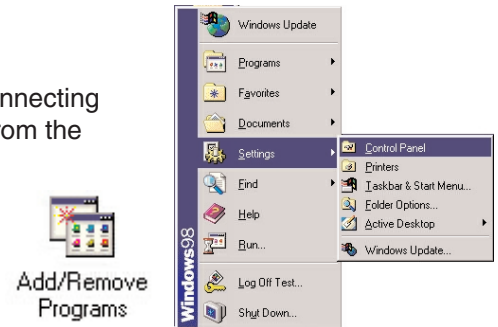
[Return to Table of Contents ▲](#)

## When you no longer need the device drivers, you can delete them using the procedure given below

Note that you can no longer use the MO drive unit if you delete the device drivers.

### Disconnect the MO Drive Unit

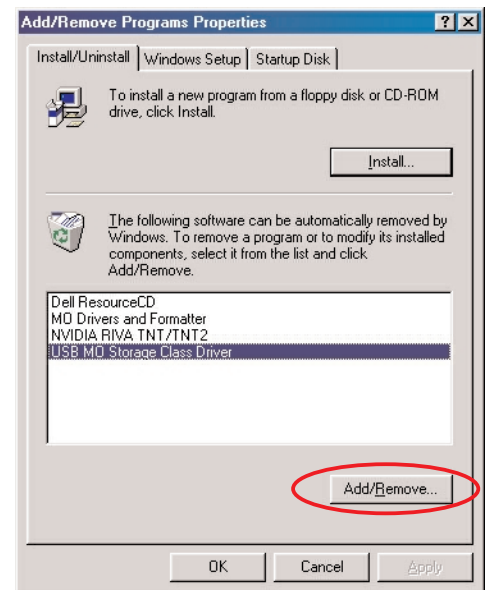
1. Disconnect the MO drive unit. (Refer to the instructions for disconnecting the MO drive unit on [page 41](#)) Then disconnect the USB cable from the computer.  
Double-click [Control Panel] in [My Computer] and then double-click [Add/Remove Programs] to open the Add/Remove Programs window.



\* Windows Me users should proceed to step 4 since steps 2 and 3 given below can be omitted.

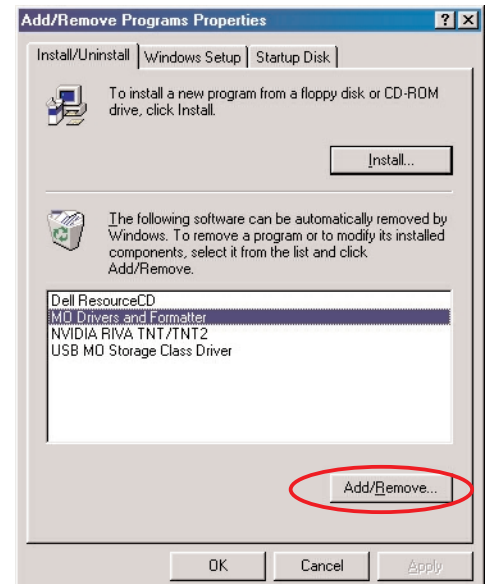
### Delete the USB MO Storage Class Driver

2. Select [USB MO Storage Class Driver] and click [Add/Remove].
3. Then proceed with the uninstallation as directed by the instructions on the screen.



### Delete MO Drivers and Formatter

4. Select [MO Drivers and Formatter] and click [Add/Remove].
5. Then proceed with the uninstallation as directed by the instructions on the screen.



Return to Table of Contents ▲

## When you no longer need the device drivers, you can delete them using the procedure given below

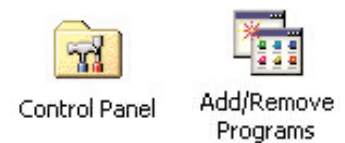
To uninstall the device drivers in Windows 2000 or Windows XP, first log on using a computer administrator account or an account that has administrator privileges.

Note that you can no longer use the MO drive unit if you delete the device drivers.

1. Disconnect the MO drive unit. (Refer to the instructions for disconnecting the MO drive unit on page 41.) Then disconnect the USB cable from the computer.

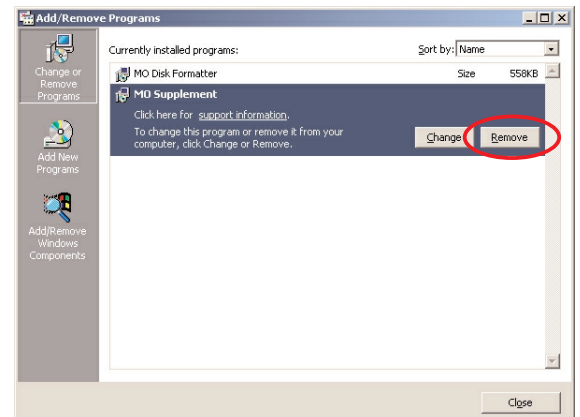
Double-click [Control Panel] in [My Computer] and then double-click [Add/Remove Programs] to open the Add/Remove Programs window.

\* In Windows XP, it is now [Add or Remove Programs]. (The figure shows Windows 2000.)



### Delete MO Supplement

2. Select [MO Supplement] and click [Remove].
3. Then proceed with the uninstallation as directed by the instructions on the screen.



### Uninstall the Privilege Modification Tool

4. Open [Add/Remove Programs] from [Control Panel] as shown in step 1.

\* In Windows XP, it is now [Add or Remove Programs].

#### ● Windows 2000

Select [MO Disk Formatter] and click [Remove].

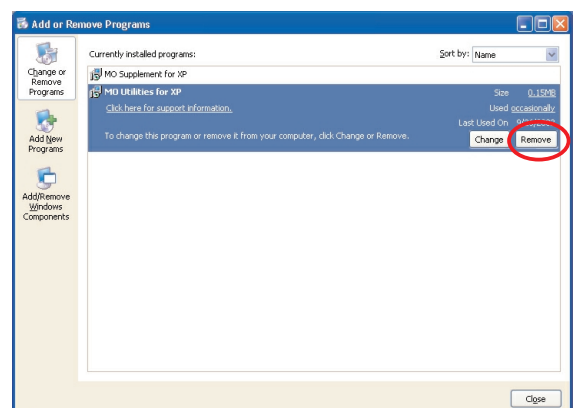
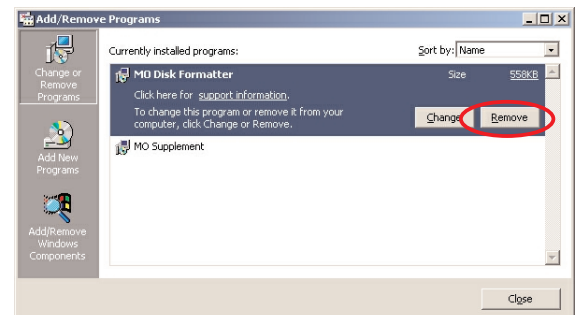
#### ■ Caution

- Uninstalling the privileges modification tool also uninstalls the formatting tools.

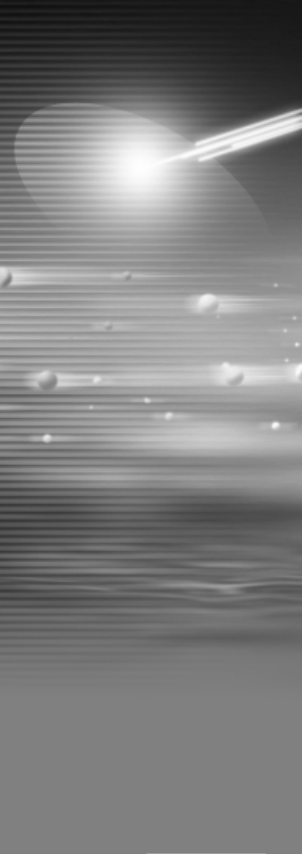
#### ● Windows XP

Select [MO Utilities for XP] and click [Remove].

5. Then proceed with the uninstallation as directed by the instructions on the screen.







# 5

## Troubleshooting

[Return to Table of Contents ▲](#)

*DynaMO*

---

*640 Pocket*

[Return to Table of Contents ▲](#)

Question	Check	Solution
<p><b>Q1.</b> (For all operating systems) When I format an MO disk, the capacity displayed on the desktop is less than that listed on the MO disk packaging.</p>	<p>_____</p>	<p>The formula used for calculating the capacity for the MO disk packaging is 1KB=1000 bytes, but on the computer it is calculated at 1KB=1024 bytes. Also, when you format a disk, some disk space is used to record disk information. For these reasons, the disk capacity displayed after formatting is lower. (For example, the formatted capacity of a 640 MB MO disk may be around 600 MB.)</p>
<p><b>Q2.</b> (For all operating systems) I can't read MO disks formatted in Windows on my Macintosh.</p>	<p>_____</p>	<p>The Windows-formatted MO disk capacities that are compatible with Mac OS are 128 MB to 540 MB. MO disks of 640 MB and larger are not compatible with Mac OS.</p>
<p><b>Q3.</b> (Windows 98 (including Second Edition)/Windows Me) I can't format my MO disk.  I can't copy onto my MO disks.</p>	<p>Check that the disk is not write protected.</p>	<p>Remove the write protection.</p>

### Question

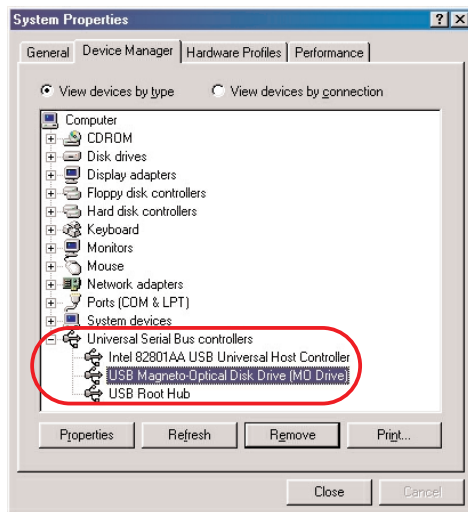
**Q4.** (Windows 98 (including Second Edition))  
I connected the MO, but the icon doesn't appear in [My Computer].

### Check

- ① Is the cable connected?  
Is the MO drive unit's power/access light lit?
  
- ② Open [My Computer] > [Control Panel] > [System] > [Device Manager] tab and check that [USB Magneto-Optical Disk Drive (MO Drive)] is displayed under [Universal Serial Bus Controllers].

### Solution

- ①-1 Check that the USB cable is correctly connected.
- ①-2 If you connected the drive while Windows 98 was not running, or was in Standby or Suspended mode, restore Windows 98 and then connect the USB cable.
- ①-3 Briefly disconnect and then reconnect the USB cable. If your PC still does not recognize the MO drive unit, disconnect the cable again, restart Windows 98 and then connect the USB cable.
- ② The device drivers may not be properly installed or Windows 98 may not be recognizing the unit correctly. Use the following procedure to erase the USB information and then reinstall the device drivers.
  - 1) Click [System] in [Control Panel] in the [My Computer] window and then open [Device Manager] in [System Properties].
  - 2) Delete [USB Magneto-Optical Disk Drive (MO Drive)] in the Universal Serial Bus Controllers list, or delete [USB Magneto-Optical Device] in [Other Devices] (in some cases it may appear as [USB Devices]).
  - 3) Disconnect the USB cable for the USB MO drive.
  - 4) Refer to [p.44](#) and uninstall the USB MO Storage Class Driver.
  - 5) Restart Windows 98.
  - 6) Refer to [p.16](#) and reinstall the device drivers.



**Q5.** (Windows 98 (including Second Edition)/Windows Me)  
After executing FDISK for the MO disk, its capacity decreased to one quarter its previous size.

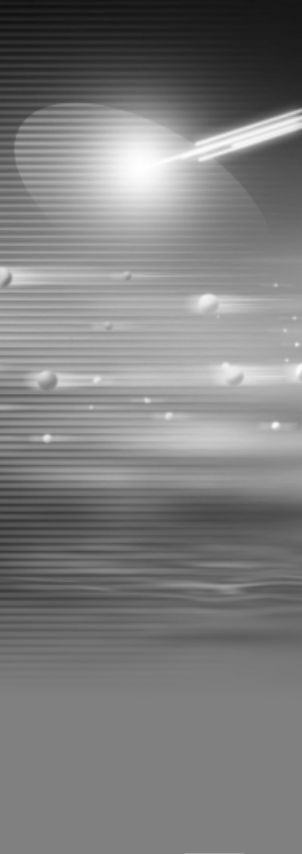
MO disks are not compatible with FDISK.

**Q6.** (Windows 98 (including Second Edition)/Windows Me)  
I can't use Drive Converter (FAT32) with an MO disk.

Drive Converter (FAT32) does not support MO disks.

Question	Check	Solution
<p><b>Q7.</b> (Windows 98 (including Second Edition))</p> <p>The MO drive unit does not operate normally after I restart the operating system when my CD-ROM drive is connected via a PC Card and the MO drive unit is connected using a hot plug.</p>	<p>_____</p>	<p>When restarting the operating system, first disconnect the MO drive unit from the PC's USB port and then reconnect the unit after the restart. Also, if you shutdown the operating system, turn the computer off and then back on again, concurrent connections are no problem.</p>
<p><b>Q8.</b> (Windows 98 (including Second Edition)/Windows Me/Windows 2000/Windows XP)</p> <p>I can't copy disks in Windows.</p>	<p>_____</p>	<p>The Disk Copy function on the shortcut menu cannot be used with MO disks.</p>
<p><b>Q9.</b> (Windows 98 (including Second Edition)/Windows Me/Windows 2000/Windows XP)</p> <p>Although there is free disk space on the MO disk, I can't save files to it.</p> <p>I formatted the MO disk and then tried to copy from the hard disk to the MO drive, but none of the files were copied.</p> <p>Although there was still free space on the MO disk, after I copied about 500 files to it, an error message appeared and the remaining files were not copied.</p>	<p>_____</p>	<p>If the MO disk was formatted in the FAT16 (FAT) file format, there is a limit to the number of files that can be registered in the root directory. (If there are no files with long file names, the maximum number of files is 512.)</p> <p>If this occurs, create a folder and write the files into it. If you cannot create a folder, delete some files and then create the folder.</p> <p>There is no limit to the number of files that can be stored in a folder you create.</p>
<p><b>Q10.</b> (Windows 98 (including Second Edition)/Windows Me/Windows 2000/Windows XP)</p> <p>The drive icon is not displayed when the PC wakes up from energy saving mode.</p>	<p>_____</p>	<ul style="list-style-type: none"> <li>• Unplug the USB connector and then plug it back in. Alternatively, connect to a different USB port.</li> <li>• If it is connected via a USB hub, connect the unit directly to the USB port on the computer itself.</li> <li>• Restart the computer.</li> </ul>

Question	Check	Solution
<p><b>Q11.</b> (Windows 98 (including Second Edition) /Windows Me/ Windows 2000/ Windows XP)</p> <p>When connected using a hot plug, the drive icon is sometimes not displayed.</p>	<p>_____</p>	<ul style="list-style-type: none"> <li>• Unplug the USB connector and then plug it back in. Alternatively, connect to a different USB port.</li> <li>• If it is connected via a USB hub, connect the unit directly to the USB port on the computer itself.</li> <li>• Restart the computer.</li> </ul>
<p><b>Q12.</b> (Windows 2000/XP)</p> <p>In Windows 2000/XP, I can't format or eject MO disks or install or uninstall the device drivers.</p>	<p>When you logged on to Windows, did you log on using a computer administrator account or an account with administrator privileges?</p>	<p>If you log on using something other than a computer administrator account or an account with administrator privileges, you cannot format or eject MO disks or install or uninstall device drivers. This occurs due to the restrictions placed on users other than (Windows) system administrators to prevent inadvertent changes to the system. Log on using a computer administrator account or one that has administrator privileges.</p> <p><small>* An Administrator is a system administrator or a user with administrator privileges.</small></p>
<p><b>Q13.</b> (Mac OS)</p> <p>When I start up Mac OS with an MO disk loaded in the MO drive unit, I can't read MO disk properly.</p>	<p>_____</p>	<p>Eject the MO disk from the MO drive unit. Briefly disconnect the USB cable for the MO drive unit from your Macintosh's USB port and then reconnect it.</p>



# 6

## Product Specifications

---

[Return to Table of Contents ▲](#)

*DynaMO*  

---

*640 Pocket*

# 6-1

## Product Specifications

*DynaMO*  
*640 Pocket*

[Return to Table of Contents ▲](#)

Product Name		DynaMO 640 Pocket
Compatible MO Disks		128 MB/230 MB/540 MB/640 MB 3.5 inch cartridge type, ISO Standard Format Magneto-Optical Disks
Rotation Speed ( $\pm 0.1\%$ )		3,000 rpm
Average Search Time		43 ms
Buffer Capacity		2 MB
Operating Environment	Operating	Temperature: 5°C to 35°C (Gradient: 15°C/hour or less) Humidity: 10% to 85% (No condensation) Max. Wet-bulb Temperature: 29°C or less
	Not Operating	Temperature: 0°C to 50°C Humidity: 10% to 85% (No condensation) Max. Wet-bulb Temperature: 36°C or less
Vibration	Operating	Vibration: 3.9 m/s <sup>2</sup> (5 to 500 Hz) Shock: 19.6 m/s <sup>2</sup> (10 ms half sine)
	Storage	Vibration: 9.8 m/s <sup>2</sup> (5 to 500 Hz) Shock: 9.0 m/s <sup>2</sup> (10 ms half sine)
MTBF		100,000 Hours
Interface		USB 1.1
Connector		USB mini-B (5 pin)
Power Supply		USB bus power (optional special AC Adapter may also be used)
Power Consumption		2.5 W
External Dimensions		108 × 143 × 23 mm (W × D × H) (excluding protrusions)
Weight		400 g (excluding stand)

\* The contents of this product and the product specification and external appearance are subject to change without prior notification.



*DynaMO*  
*640 Pocket*

**DynaMO 640 Pocket Manual**

Date of Publication • Edition | November 2002 • 1st Edition

Manufactured by: **Fujitsu Limited**

[Return to Table of Contents ▲](#)